

# BISHOPSGATE GOODSYARD PLOT 1 RMA

## 5.08 THE BASE

The base strata reflects the historic continuity of the Oriel wall and makes this a part of the building's facade, with shop fronts and points of access for both pedestrians and vehicles considered when deciding on the design and sizes of the arches.

Instead of an exact replica of the boundary wall, the base strata takes a more contemporary approach by having a pared back brick arch articulation. In addition, the articulation of the arches also complies with the proposed structural grid and other logistic requirements such as the vehicular entrance to the loading bay.



Proposed Ground Floor Arches

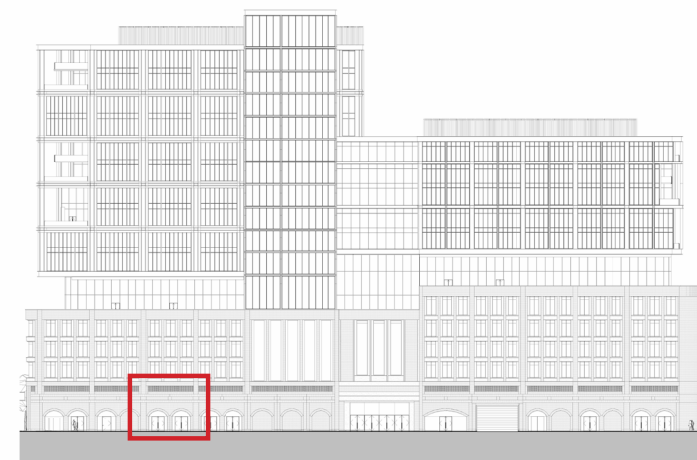
Hit and miss brick detailing to allow bike store passive ventilation

Soldier course brick detail horizontal banding to align and distinguish base plinth with upper plinth

Regular grid columns expressed on facade with arched bays to North Facade

Reclaimed brickwork with pink hue to Ground Floor including arches

Decorative fascia in front of retail unit ventilation louvres



North Elevation



Base Strata

INTRODUCTION

THE BRIEF

SITE ANALYSIS

CONSTRAINTS

**DESIGN APPROACH**

CONSULTANTS

ACCESSIBILITY

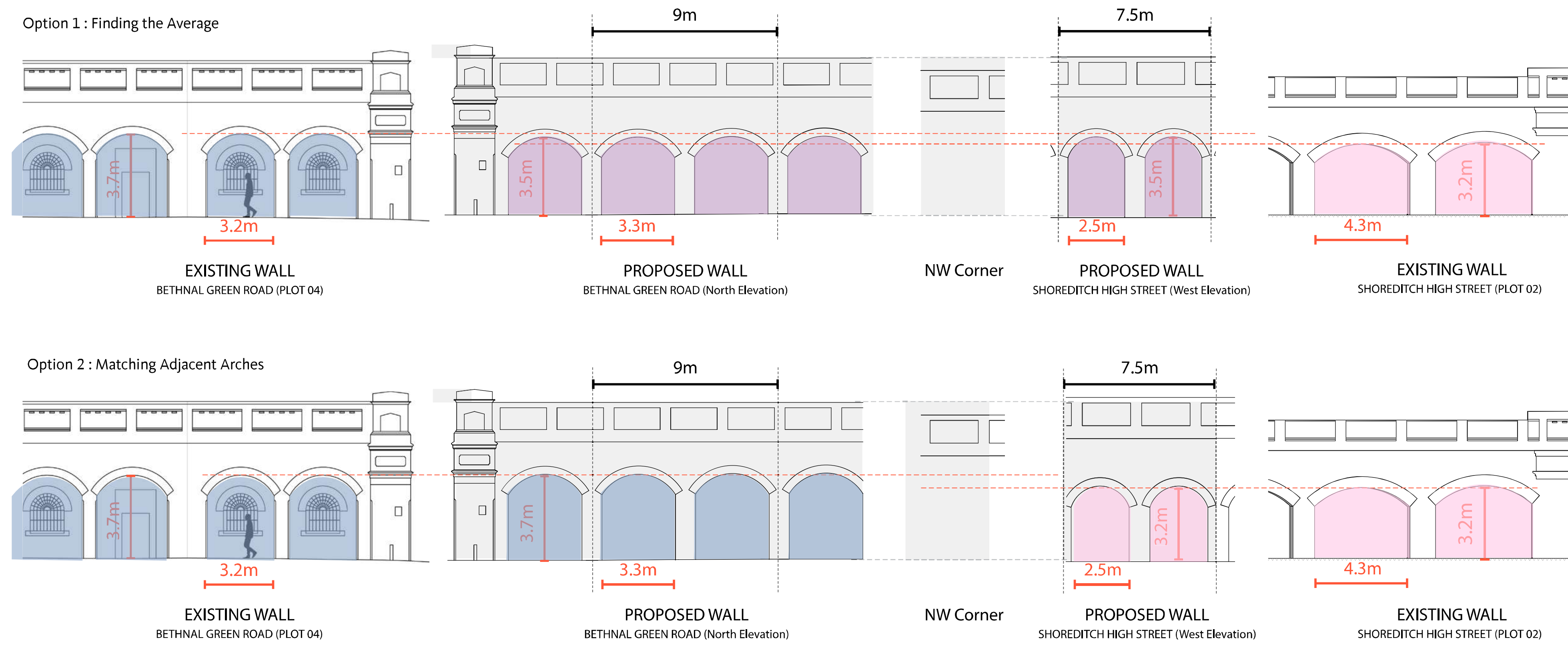
CRIME REDUCTION

SUMMARY



# BISHOPSGATE GOODSYARD PLOT 1 RMA

## 5.08 THE BASE



Development of proposed arches

- INTRODUCTION
- THE BRIEF
- SITE ANALYSIS
- CONSTRAINTS
- DESIGN APPROACH**
- CONSULTANTS
- ACCESSIBILITY
- CRIME REDUCTION
- SUMMARY



## 5.08 THE BASE

The arch geometry on the North Elevation matches that of the demolished historic arches around the Goods Yard site. These new arches will continue the pattern language from East on Bethnal Green Road.

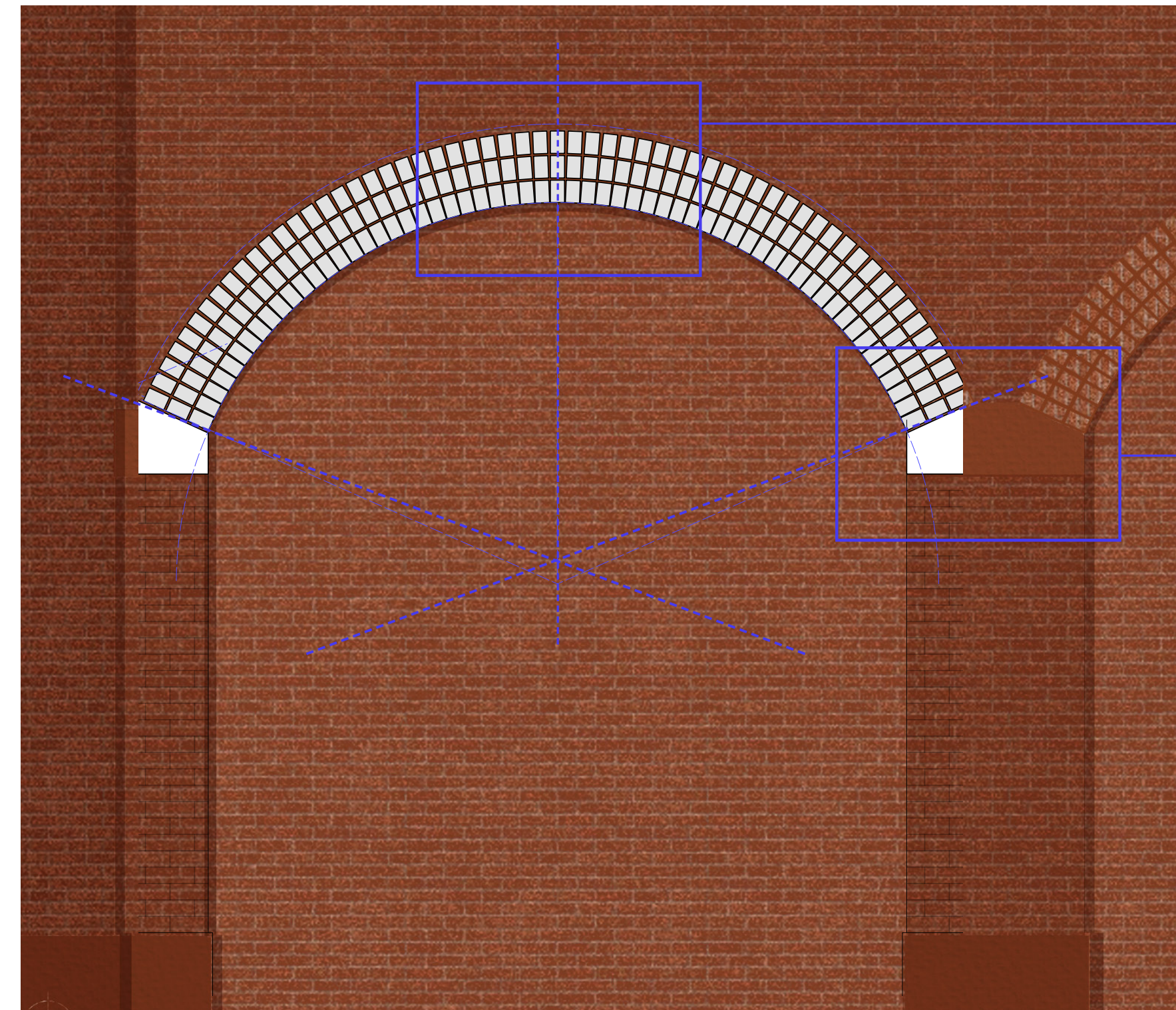
Experiments with masonry expression resulted in a re-interpretation of the segmented arch.

The replica three-portrait brick stack bonded arch are proposed. This minimises the visibility of the splayed mortar gap between bricks. It also allows the provision of a pistol brick in section, creating a more substantial arch appearance.

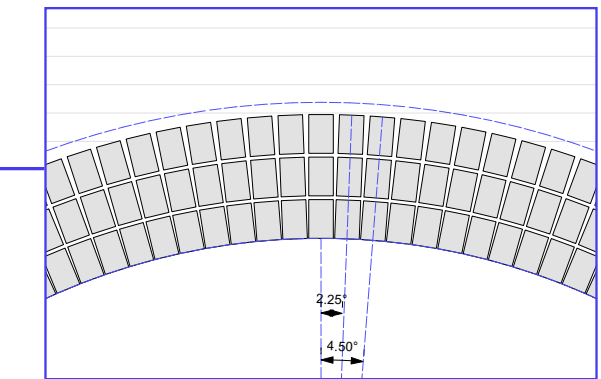
The envelope will be constructed using pre-fabricated, pre-cast wall systems with reclaimed red brickwork.



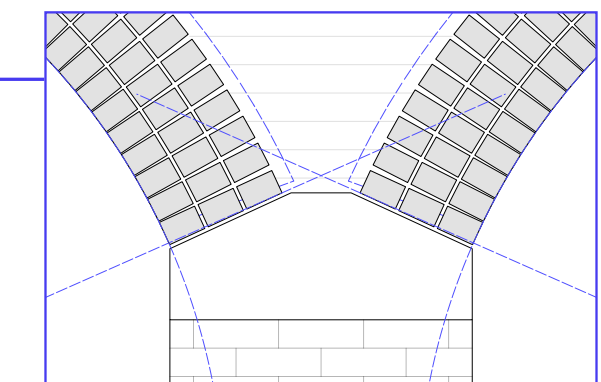
Existing arched wall



Proposed arches



Key Stone Expression - Matching existing arches



Spring Point Expression - Matching existing arches

INTRODUCTION

THE BRIEF

SITE ANALYSIS

CONSTRAINTS

**DESIGN APPROACH**

CONSULTANTS

ACCESSIBILITY

CRIME REDUCTION

SUMMARY



# BISHOPSGATE GOODSYARD PLOT 1 RMA

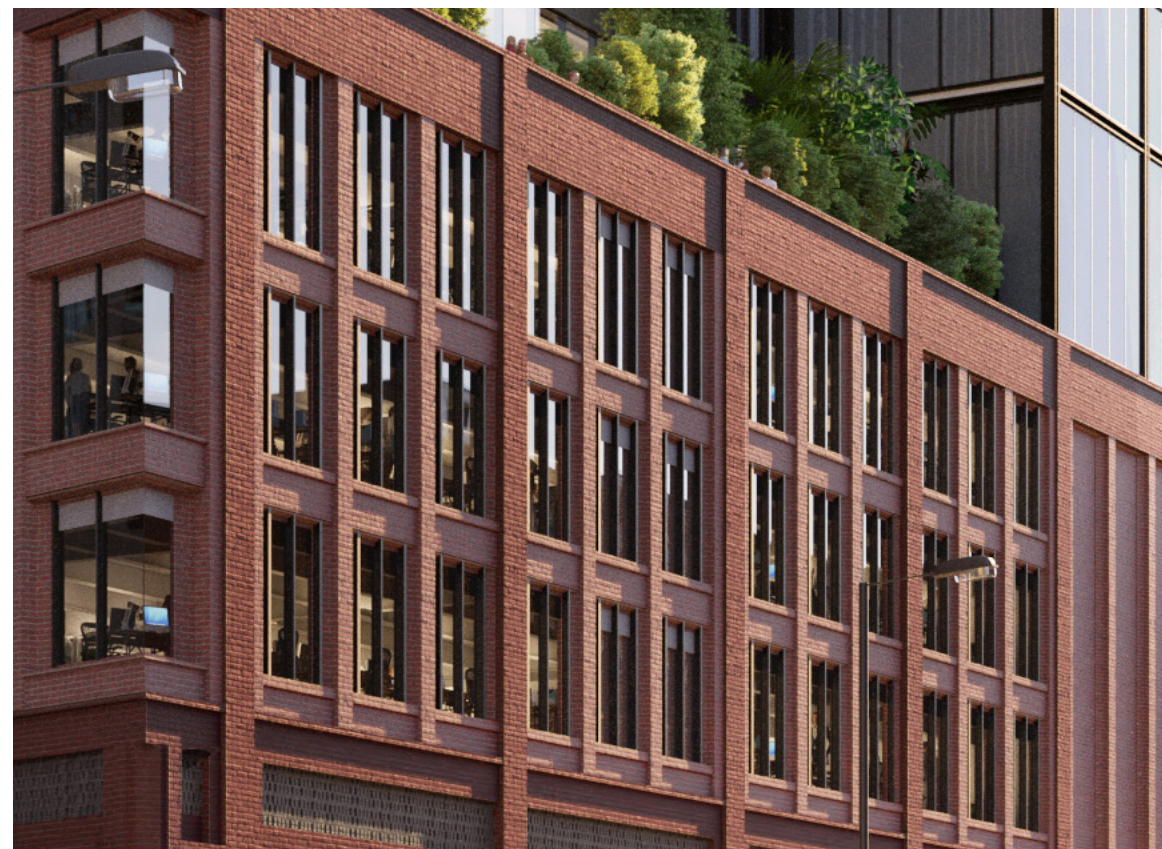
## 5.09 THE MIDDLE

### Brick Articulation as Transitional Grid:

The middle strata spans across Levels 01-04 and provides a heavier, solid base to the general massing of the building. The facade articulation takes references from the Shoreditch warehouse vernacular, re-interpreting existing masonry pier rhythms and large-spanning concrete window reveals.

### Breathing Space:

Taking inspiration from the plinth above the existing arches, the proposed facade introduces a scale-less mid-panel. This mesh panel on top of hit-and-miss brick work, surrounded by brick fascia channels, conceals the variety of uses in the cycle store behind, allowing the main grid to dominate.



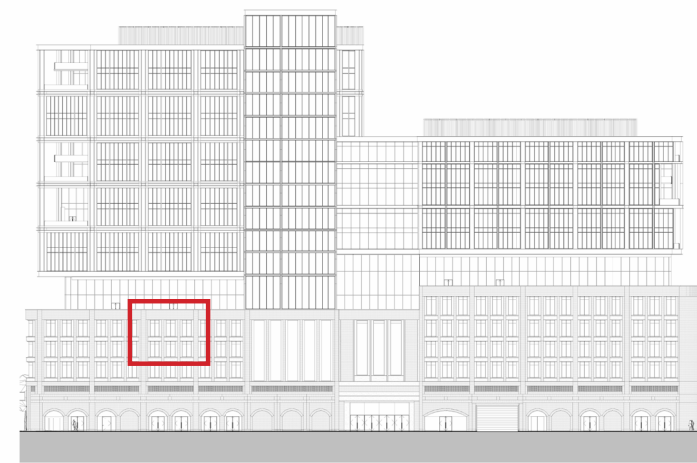
Primary and secondary gridded brick facade

Darker red brick to upper plinth section (L01-L04) to distinguish from Ground Floor

GRC infill panels at each level with GRC reveals

Contemporary interpretation of the Shoreditch warehouse vernacular with regular grid columns expressed in elevation

Regular grid columns align with base of plinth (GF)



North Elevation



Middle Strata (L02 - L05)

INTRODUCTION

THE BRIEF

SITE ANALYSIS

CONSTRAINTS

**DESIGN APPROACH**

CONSULTANTS

ACCESSIBILITY

CRIME REDUCTION

SUMMARY



5.10 THE TRANSITION LEVELS

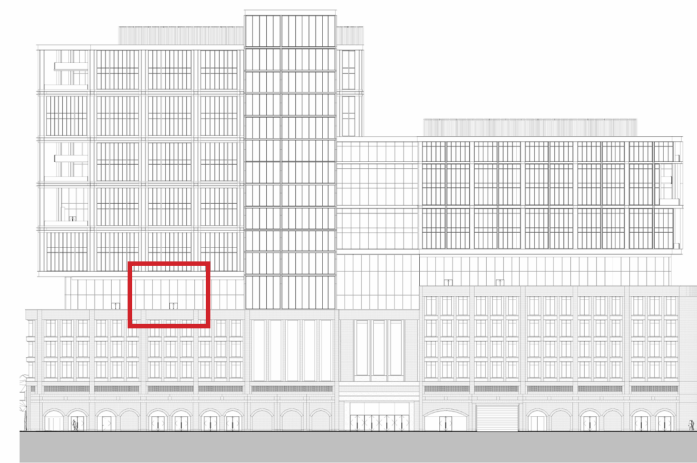
The transition levels have multiple functions for the architectural expression of building. Contextually - the transition levels align with the height of The Tea Building - ensuring there is a direct relationship when viewed from the street.

The legibility of the Middle and Upper strata is accentuated through the introduction of a recessed transition level, whilst this set back also provides the opportunity for external amenity space.



Frameless curtain wall facade

Curtain wall stick system



North Elevation



The transition levels

INTRODUCTION



THE BRIEF



SITE ANALYSIS



CONSTRAINTS



**DESIGN APPROACH**



CONSULTANTS



ACCESSIBILITY



CRIME REDUCTION



SUMMARY



## 5.11 THE UPPER - EAST

The upper strata of the proposed facade is a testament to the possible future of workplace design in the Shoreditch area. This section of the facade accommodates the main office space so achieving adequate values of daylighting is a major factor in the design.

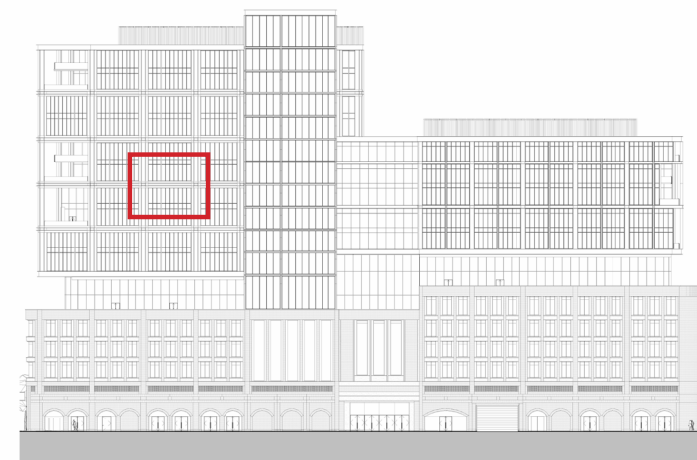
Other key factors includes the need to emphasise the structural grid of the proposed floor plate. Incorporating terraces and outdoor green space will improve the indoor and outdoor experience of the end users of the building.



Lightweight steel frame upper floors

Upper dark metal unitised curtain wall system

Red hue to spandrel panels to provide visual connection to plinth on west side of the building



North Elevation



The Upper

INTRODUCTION

THE BRIEF

SITE ANALYSIS

CONSTRAINTS

**DESIGN APPROACH**

CONSULTANTS

ACCESSIBILITY

CRIME REDUCTION

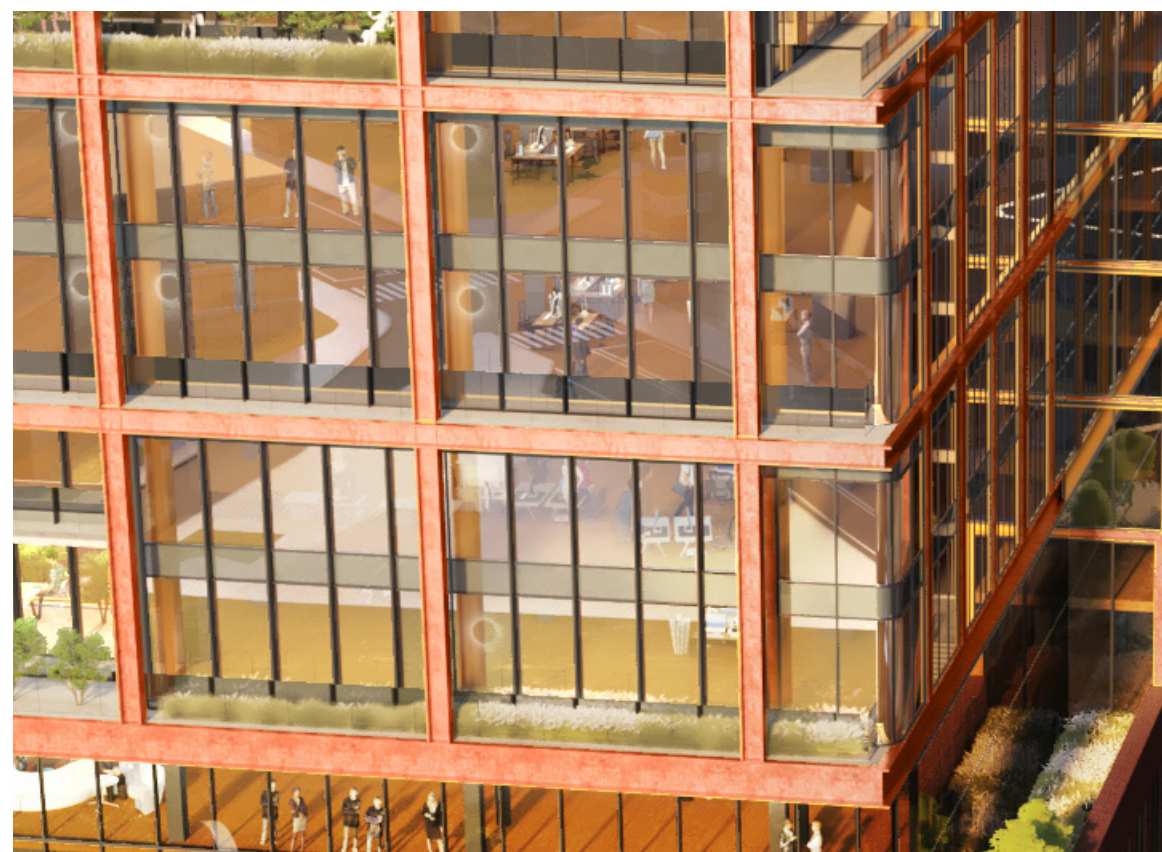
SUMMARY



## 5.12 THE UPPER - WEST

The colour of the primary grid differentiates from the east side of the building and acknowledges the red brick that is widely found in the Shoreditch area.

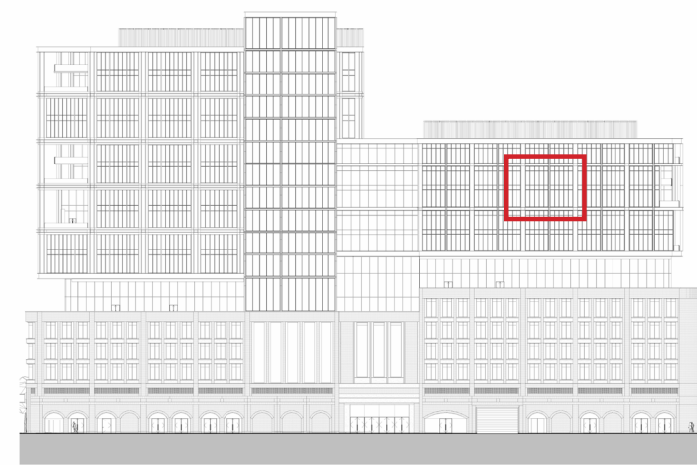
The metal frame otherwise follows a similar proportion and setting out to the upper east side of the building.



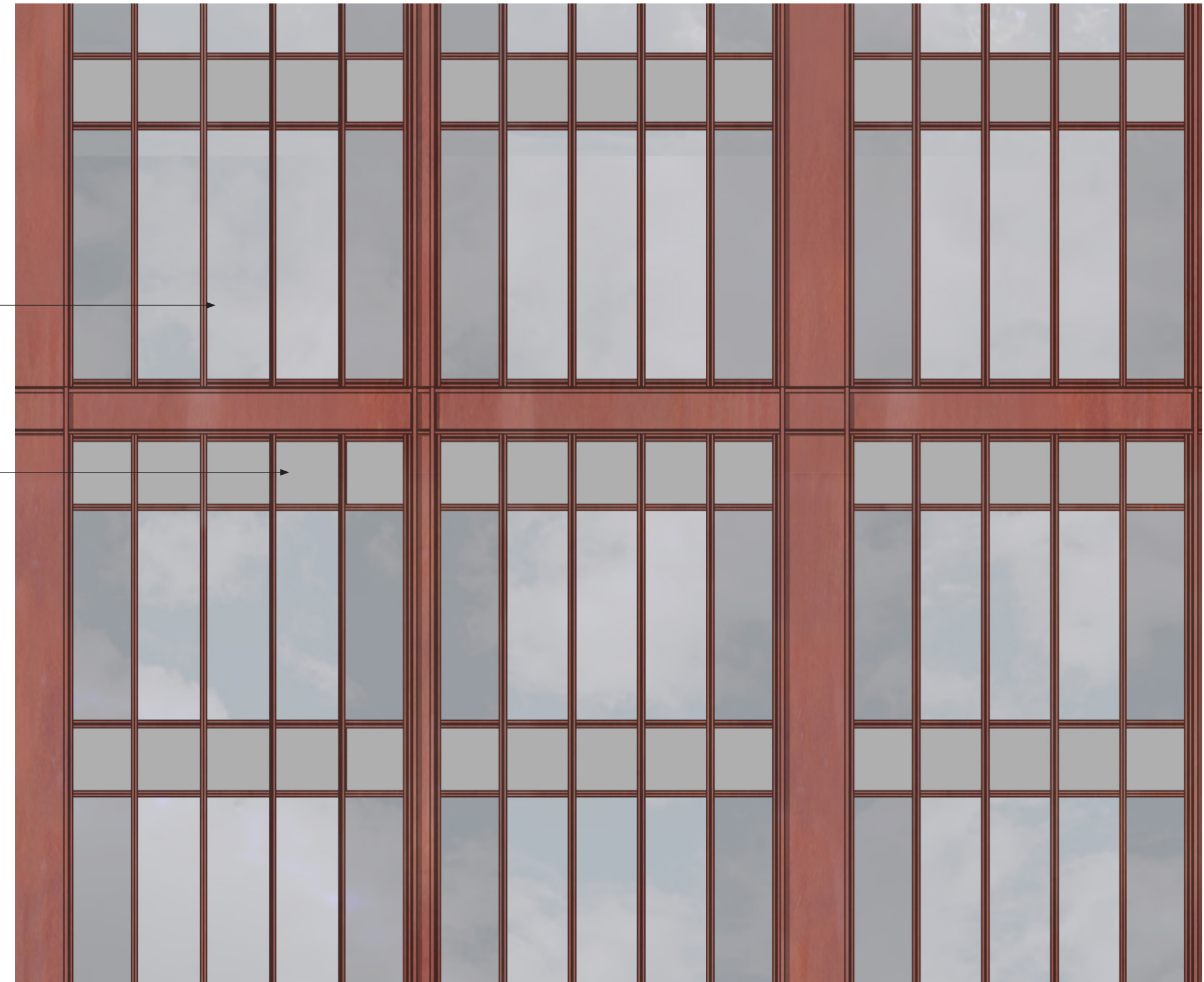
Lightweight steel frame upper floors

Upper dark metal unitised curtain wall system

Grey hue to spandrel panels to provide visual connection to plinth on west side of the building



North Elevation



The Upper

INTRODUCTION

THE BRIEF

SITE ANALYSIS

CONSTRAINTS

**DESIGN APPROACH**

CONSULTANTS

ACCESSIBILITY

CRIME REDUCTION

SUMMARY



5.13 NORTH ENTRANCE

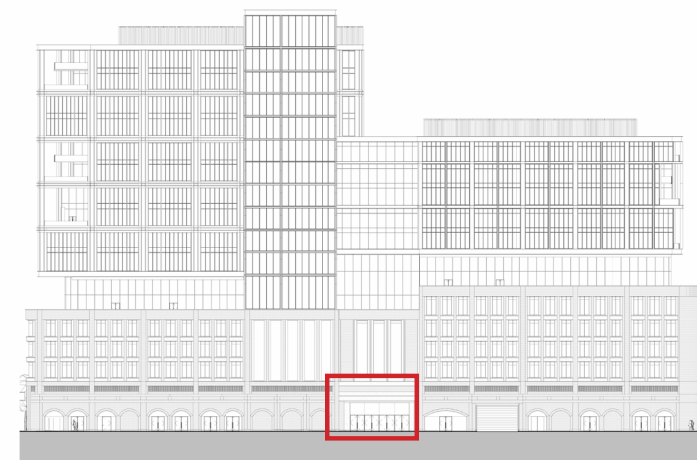
The main entrance is located centrally in the scheme and the massing is setback in this location to signal a change in purpose, a route into The Goodsyrd Masterplan. Although the typical punched panel window typology is replicated across this portion of the facade, a change in materiality to a consistent use of GRC and a simpler articulation to the entrance opening (compared to the arches) further highlights this change.



Proposed North Entrance

Setback reclaimed brick infill

GRC panels to window reveals



North Elevation



Proposed North Entrance

INTRODUCTION

THE BRIEF

SITE ANALYSIS

CONSTRAINTS

**DESIGN APPROACH**

CONSULTANTS

ACCESSIBILITY

CRIME REDUCTION

SUMMARY