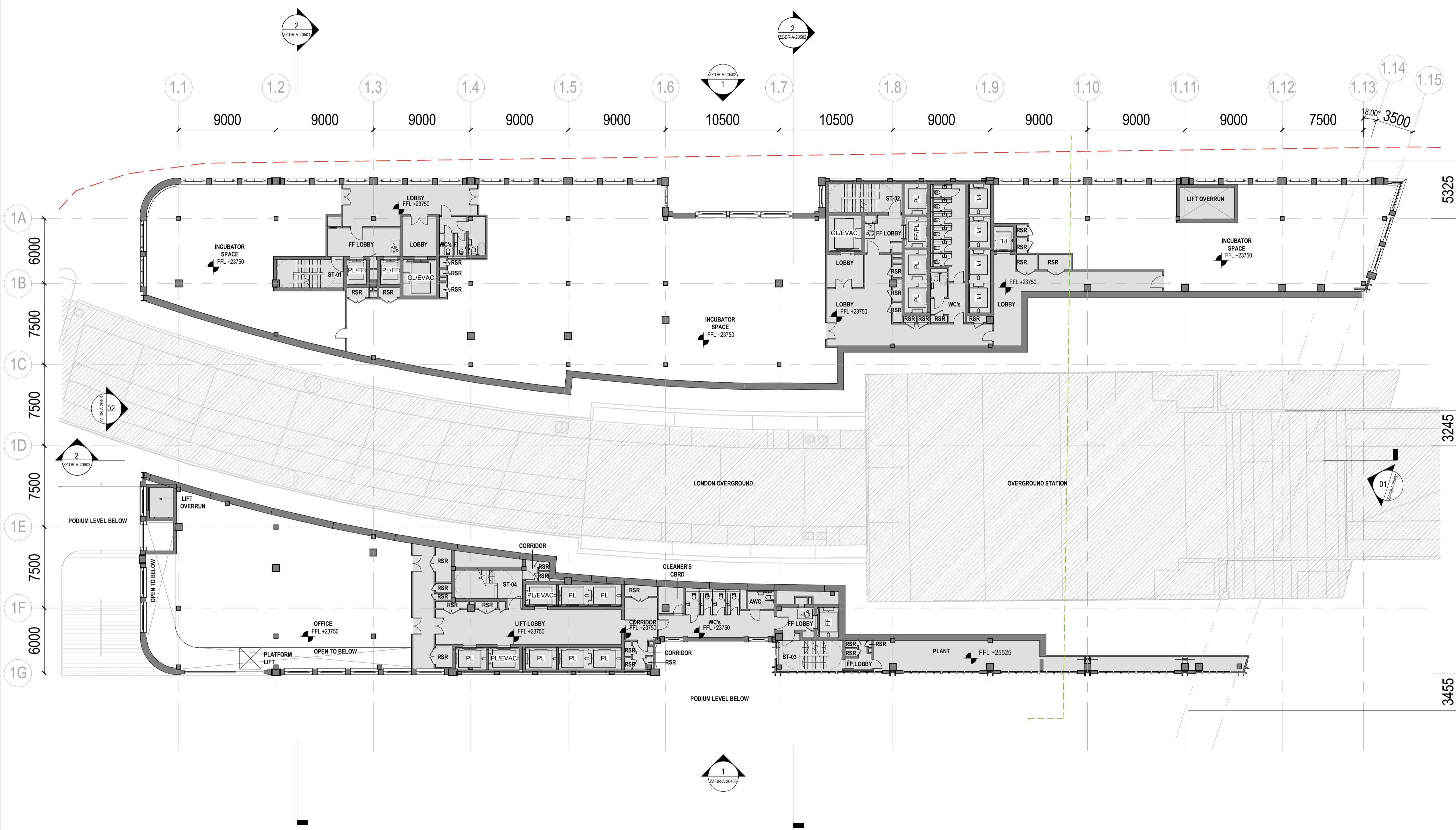


notes:  
Do not scale from drawings. All discrepancies to be reported to Gensler architect immediately.  
All dimensions to be verified by contractor on site prior to any works

LEGEND:  
 - - - APPLICATION BOUNDARY  
 --- LAND IN SAME OWNERSHIP  
 --- BOUNDARY BETWEEN HACKNEY AND TOWER HAMLETS  
 TFL ZONE  
 PLANT AND CORE AREAS  
 ANY CONTEXT INFORMATION SHOWN OUTSIDE THE SCOPE OF THIS RMA SUBMISSION IS ILLUSTRATIVE AND MAY CHANGE



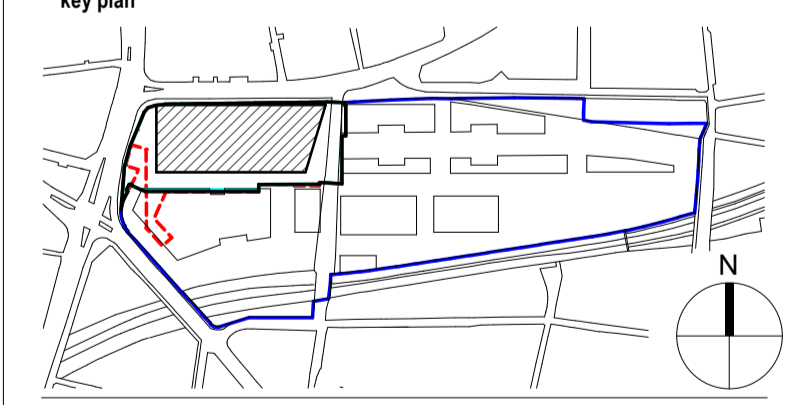
rev	date	revision note	drawn	checked
P06	07.12.23	RMA SUBMISSION	LA	JC
P05	22.11.23	RMA DRAFT	LA	RM
P04	02.11.23	RMA DRAFT + LEVEL UPDATE	LA	JC
P03	27.10.23	RMA DRAFT	MdO	DM
P02	13.03.23	PRE-APPLICATION ISSUE	KC	JC
P01	01.02.23	PRE-APPLICATION ISSUE	KC	EK

**Gensler**  
 Moretown London E1W 1YW England United Kingdom  
 Tel +44 (0) 20 7073 9600  
 Fax +44 (0) 20 7539 1917

**BGY**  
 Buckley Gray Yeoman 4.04 The Tea Building 56 Shoreditch High Street London E1 6JJ  
 Tel +44 20 7033 9913

client  
 Bishopsgate Goodyard Regeneration Limited  
 161 Marsh Wall London E14 9SJ  
 Tel +44 20 7510 9100

SCALE 1:200 (METERS) @ A1  
 key plan



category 0 GENERAL  
 family 00930 PLANS TOWN PLANNING  
 title GA PLAN - LEVEL 02

project  
 Ballymore Bishopsgate Goods Yard  
 Braithwaite St London E1 6GJ  
 project number 08.8217.000  
 scale 1:200@A1  
 project code 08.8217.000 | originator | Volume | Level | Loc. | Type | Role | number  
 drawn LA checked JC  
 date of first issue 07/12/23 status KC rev P06

BGY - GEN - 01 - 02-DR-A-00231  
 © Gensler 2022  
 All rights reserved, including but not limited to The Copyright, Design and Patents Act 1988