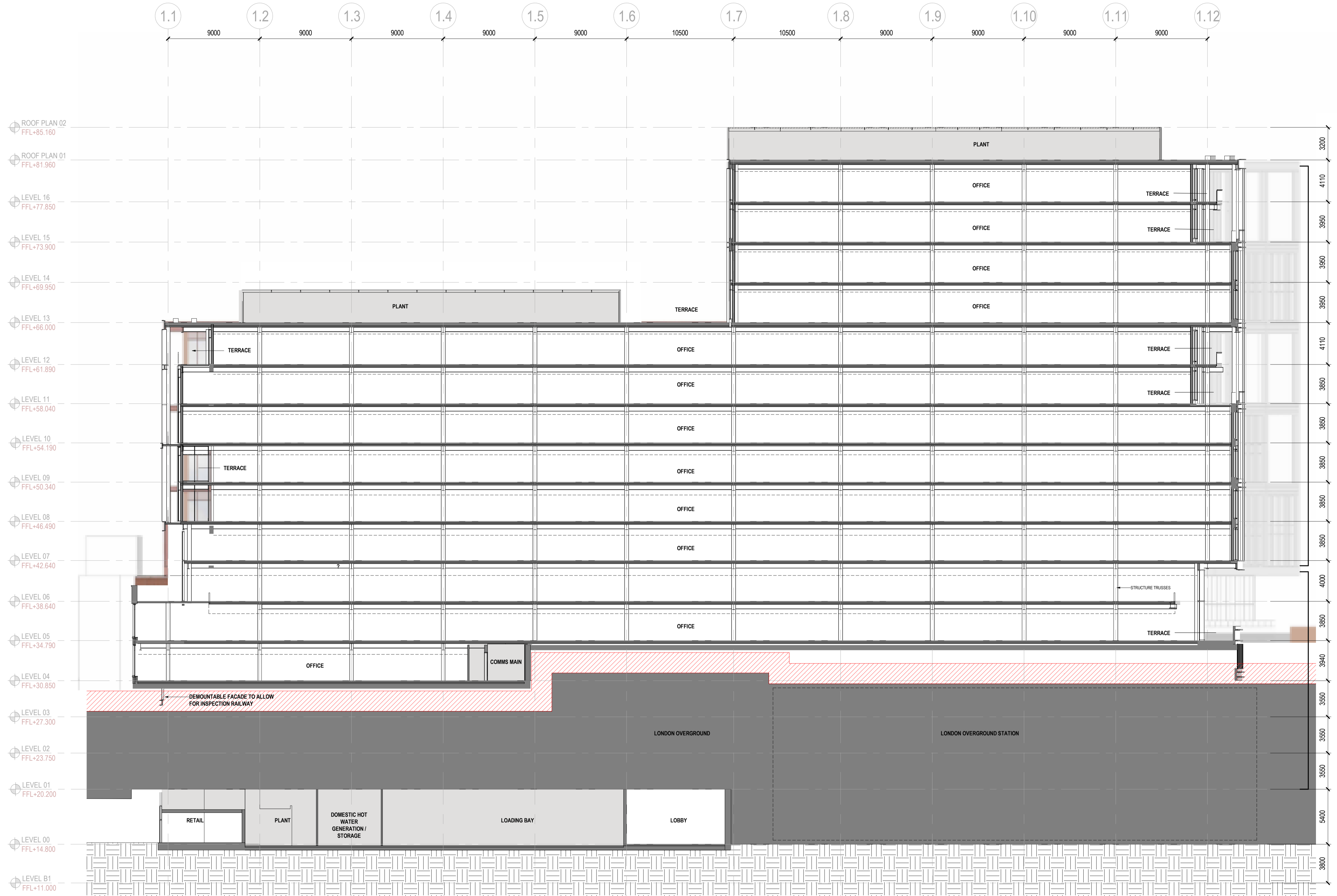


notes:
Do not scale from drawings. All discrepancies to be reported to Gensler architect immediately.
All dimensions to be verified by contractor on site prior to any works

LEGEND:
 - - - APPLICATION BOUNDARY
 --- LAND IN SAME OWNERSHIP
 --- BOUNDARY BETWEEN HACKNEY AND TOWER HAMLETS
 TFL ZONE
 PLANT AND CORE AREAS
 ANY CONTEXT INFORMATION SHOWN OUTSIDE THE SCOPE OF THIS RMA SUBMISSION IS ILLUSTRATIVE AND MAY CHANGE

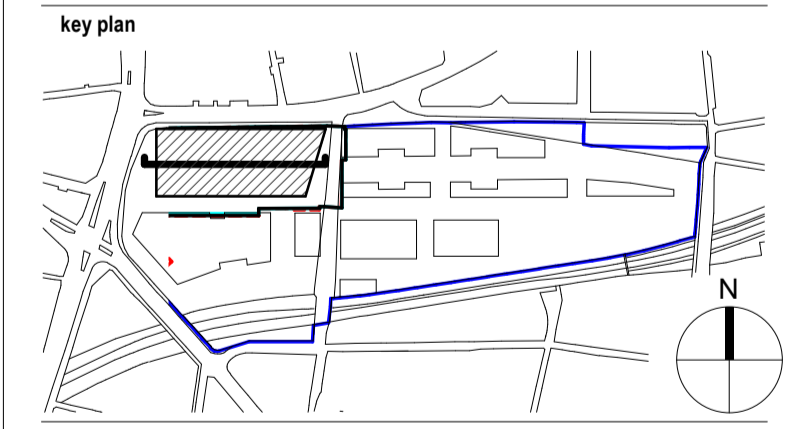
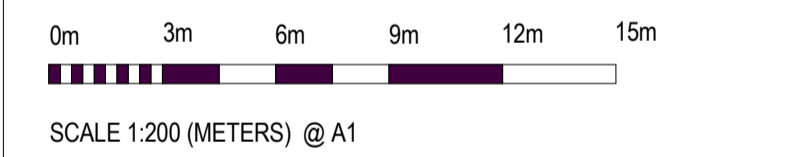


rev	date	revision note	drawn	checked
P05	07.12.23	RMA SUBMISSION	LA	JC
P04	02.11.23	RMA DRAFT + LEVEL UPDATE	LA	JC
P03	27.10.23	RMA DRAFT	MdO	DM
P02	13.03.23	PRE-APPLICATION ISSUE	KC	JC
P01	01.02.23	PRE-APPLICATION ISSUE	KC	EK

Gensler
 Moretown London E1W 1YW England United Kingdom
 Tel +44 (0) 20 7073 9600
 Fax +44 (0) 20 7539 1917

BGY
 Buckley Gray Yeoman
 4.04 The Tea Building
 56 Shoreditch High Street
 London E1 6JJ
 Tel +44 20 7033 9913

client
 Bishopsgate Goodyard Regeneration Limited
 161 Marsh Wall
 London E14 9SJ
 Tel +44 20 7510 9100



category
 0 GENERAL
 family
 00930 PLANS TOWN PLANNING
 title
 GA SECTION - EAST-WEST

project
 Ballymore Bishopsgate Goods Yard
 Braithwaite St London E1 6GJ

project number 08.8217.000	drawn LA	checked JC
scale 1: 200@A1	date of first issue 07/12/23	status S01
project code	originator	Volume Level Loc. Type Role number

rev
P05

BGY - GEN - 01 - ZZ-DR-A-00533