

6.3 Landscape Design Principals

6.3.4 LANDSCAPE MASTERPLAN: A RANGE OF LANDSCAPE EXPERIENCES SUPPORTING PEOPLE AND NATURE



Village Green



Communal Gardens





Roof terraces

Village Street

Watford Way frontage

6.4 Landscape Masterplan - Description of spaces

6.4.1 VILLAGE GREEN

The Village Green is the central hub of the scheme. It will provide a vibrant series of overlapping spaces that serve residents and visitors to the site. This combination of spaces work together to create a vibrant community hub.

The design is inspired by the Georgian style circus, offering a formal perimeter and lawn which will provide a flexible, robust 'canvas' on which residents can rest, relax, play and socialise. The Lawn itself will be raised and articulated to allow meaningful planting depths for shrubs and trees and open space for play.

A water feature cuts through the central square flanked on both sides by decking for people to sit, relax and enjoy the water. Lines of planting will act as attractive buffer between the lawn and the water feature.

The adjacent play area is suited for all age groups and includes a striking rubberised play surface, sculptural play equipment, and an articulated deck with foot holds. Seating will be provided for parents to watch over their children however the courtyard will be gated and secure from the public realm. The lawn offers informal play for all ages.

1. Shared space perimeter

A shared space offering active spill out space for cafes, shops and businesses. Circular route for pedestrians, cyclists and occasional vehicles.

2. Water feature

An attractive linear water feature with accessible by a decked area and flanked by biodiverse planting and wildlife species.

3. Central Deck

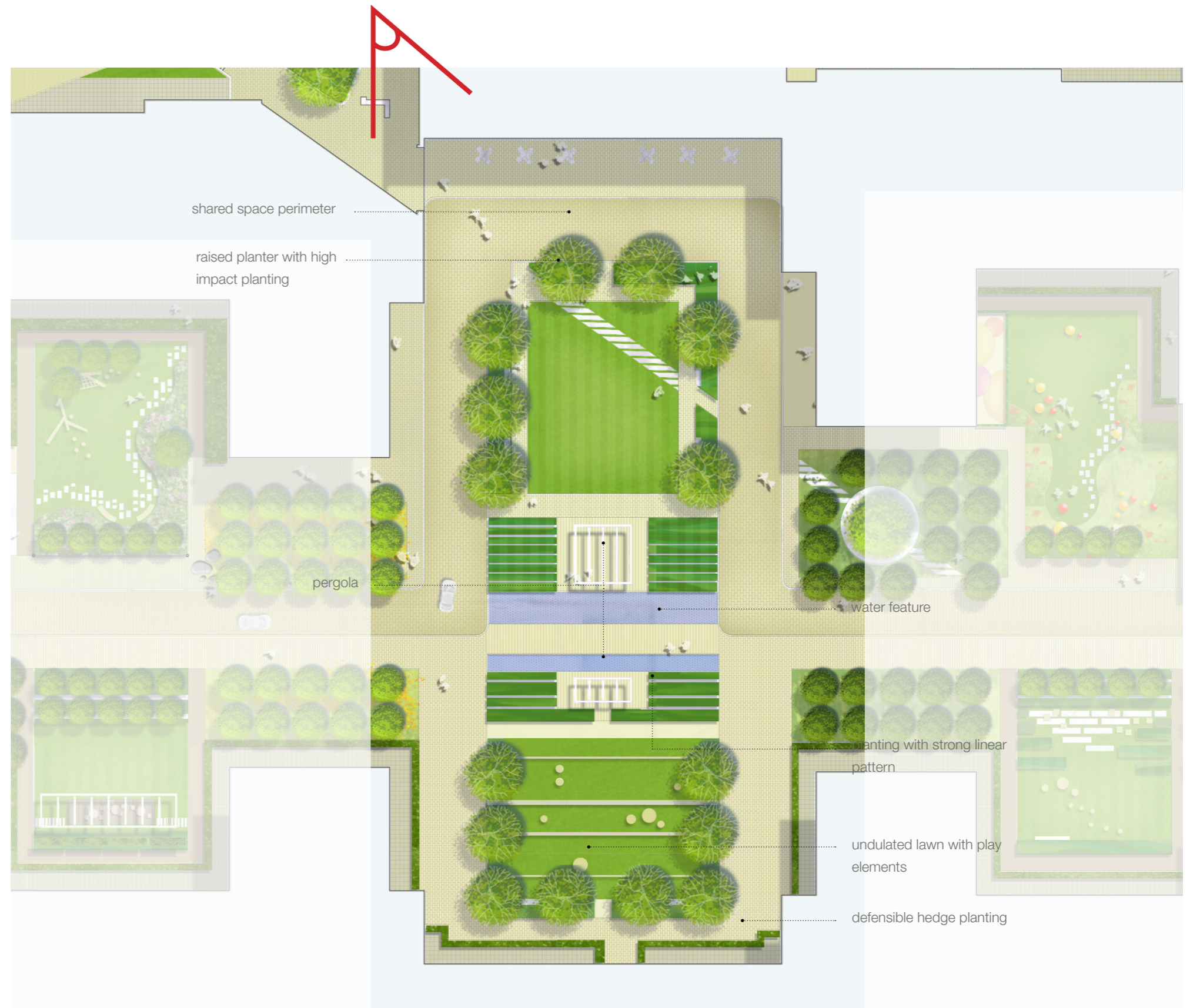
A vibrant raised deck with informal seating and a pergola to provide some shade and privacy.

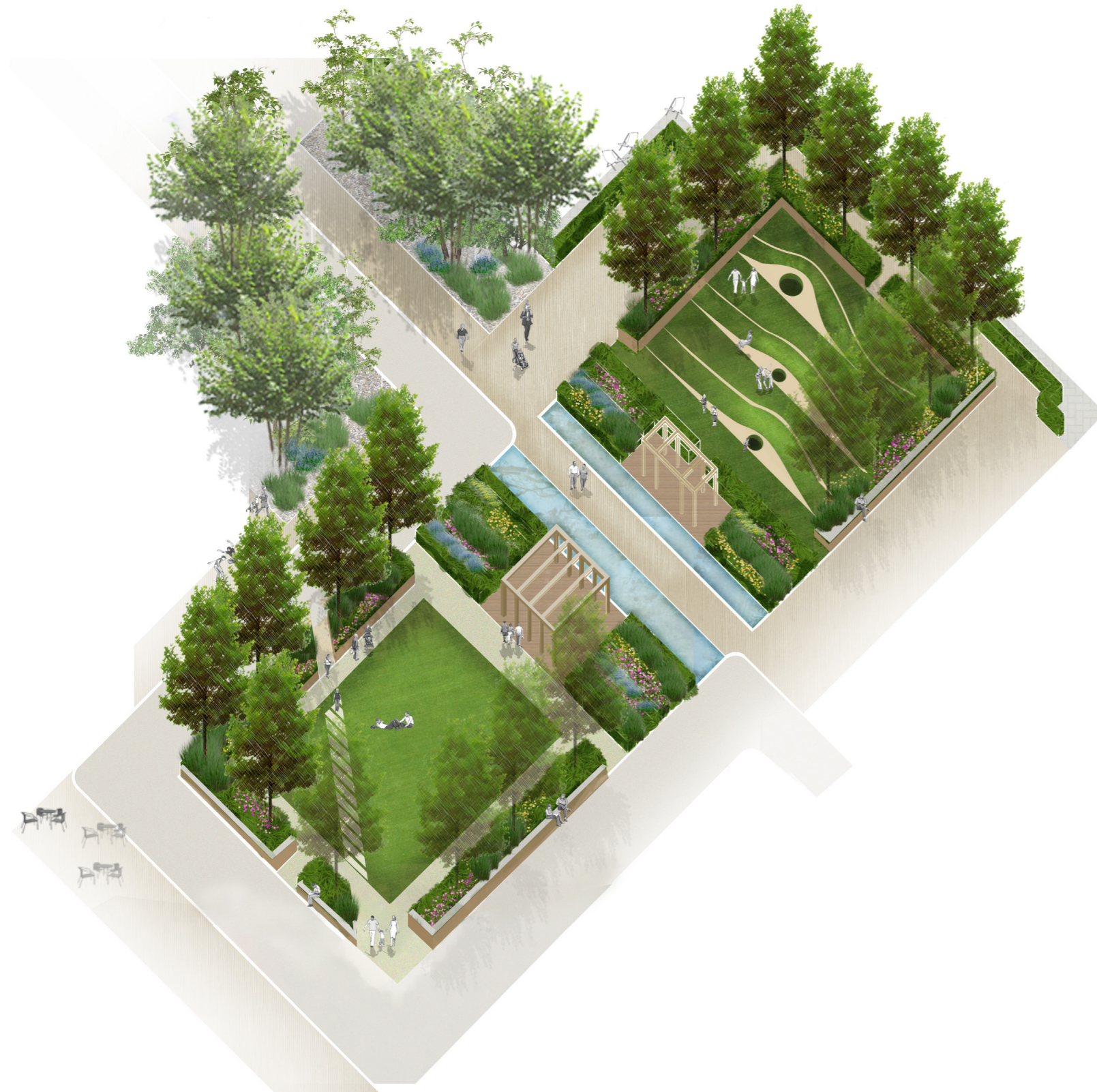
4. Formal Lawn

A large formal grass lawn for recreation, play and socialising

5. Play Area

A large designated play area with engaging non-prescriptive play elements. Surrounded by formal hedge and mixed species shrub and herbaceous planting.





linear planting and informal seating



pergola creating shade and privacy



active spill out space for cafes, shops and businesses



water feature for calm and serenity



cooling water feature



planting with strong linear pattern

6.4 Landscape Masterplan - Description of spaces

6.4.2 COMMUNAL GARDENS

VARYING IN COMPOSITION AND CHARACTER BUT EACH PROVIDING AMENITY FOR ALL AGE GROUPS

Each of the residential blocks will have direct access to a communal garden.

These spaces will offer a garden for relaxation, play and socialisation. So together they offer residents of all age groups an opportunity to meander through and enjoy each garden with their range of amenities. Research into the quality and social sustainability of recent residential developments sets out that the presence of children in spaces creates a generally more active and animated neighbourhood. By allowing older children to access the gardens of other blocks, they are more likely to meet their friends to play, and this in turn encourages younger siblings to use the spaces.

Furthermore the character of the gardens will change throughout the day and evening according to the path of the sun, so we have located both play and socialisation features in both east and west facing gardens throughout the neighbourhood.

Whilst the general public will walk through the central spine of the neighbourhood and appreciate views into each of

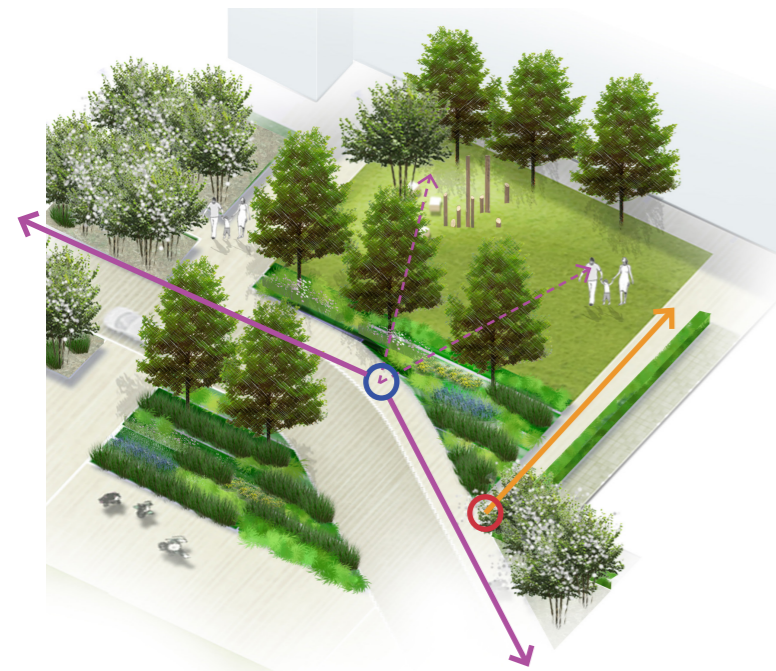
the gardens, we are discouraging physical access into the communal gardens through the combination of a narrowed entrance through planting and signage

Each of the gardens will have a heavily planted perimeter to create a lush and comfortable space that softens the impact of the overlooking buildings.

Play elements for various age groups will be dotted through the gardens, but each with door step play for toddlers. 5 - 11 year olds will benefit from more challenging elements in some of the gardens.

Seating and social spaces with pergola's for adults will also be provided, again dotted throughout for morning or afternoon sun. These will be in view of the childrens play for parents or in quieter spots for calm and solitude.

Along the village street the communal gardens are spatially separated by an orchard of fruit trees together with incidental play and seating, to be enjoyed by both the local residents and wider public.



- Views of communal gardens to be enjoyed by the public walking through the development
- Physical access into the gardens is to be intended to be for residents only, with the general public discouraged. This is achieved with low level planting along the garden perimeter to allow views over into the garden, with a narrow path opening and sign saying residents only.



- ↔ Primary pedestrian route through development (public)
- Circuits of pedestrian movement for local residents only. This route allows access to the various communal gardens for a range of amenity and play. It meanders through the neighbourhood to enjoy the spaces according to the variety of play elements and also the path of the sun throughout the day.
- - - Views of communal gardens to be enjoyed by the public walking through the development (whilst access is not encouraged)

This diagram is a plan illustrating the variety of communal gardens throughout the proposed neighbourhood. Each will have a contrasting range of play equipment for different aged children, whilst socialisation spaces for either morning or afternoon sun are located along the central spine.

These individual gardens are described in more detail within the following pages, setting out their own character and activity, whilst combining to form a cohesive neighbourhood experience.

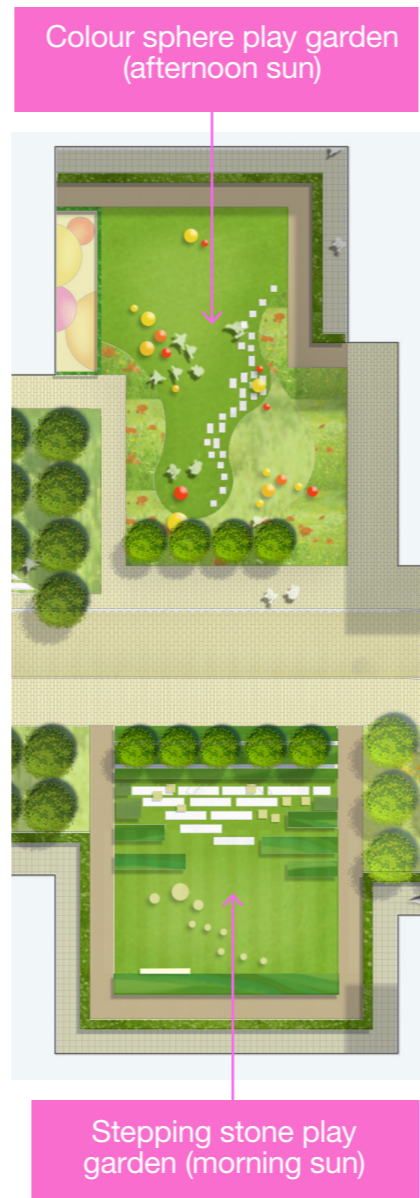


Woodland play garden (morning sun)



Prairie play garden (afternoon sun)

Socialisation space with morning sun



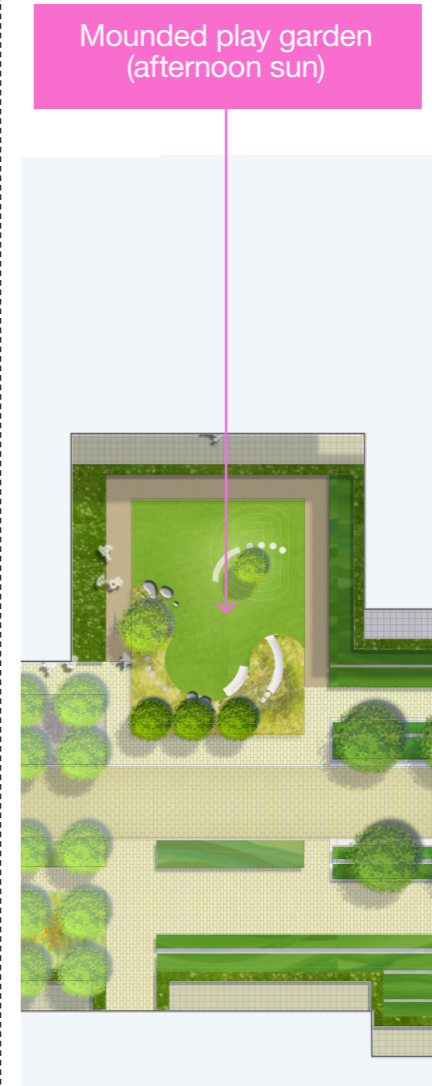
Colour sphere play garden (afternoon sun)

Stepping stone play garden (morning sun)

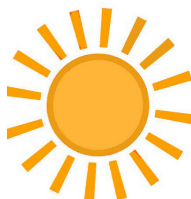


Socialisation space with workspace garden (afternoon sun)

Childrens picnic garden (morning sun)



Mounded play garden (afternoon sun)



6.4 Landscape Masterplan - Description of spaces

6.4.2 COMMUNAL GARDENS

MOUNDED PLAY GARDEN

Role:
Play for toddlers and 5-11 year olds with seating for adults

Character:
Combined formal and sculptural with undulating mounds

Aspect:
West facing: afternoon and evening sun

Amenity:
Range of play opportunities, with open lawn for flexible games, boulders and slides adjacent to grass mounds.

Planting:
Formal with defensible shrub planting around building perimeters and trees along the park frontage. Swathes of ornamental grasses form the understorey planting into which the boulders and stepping stone routes are located.





A garden created with structural planting and mounding



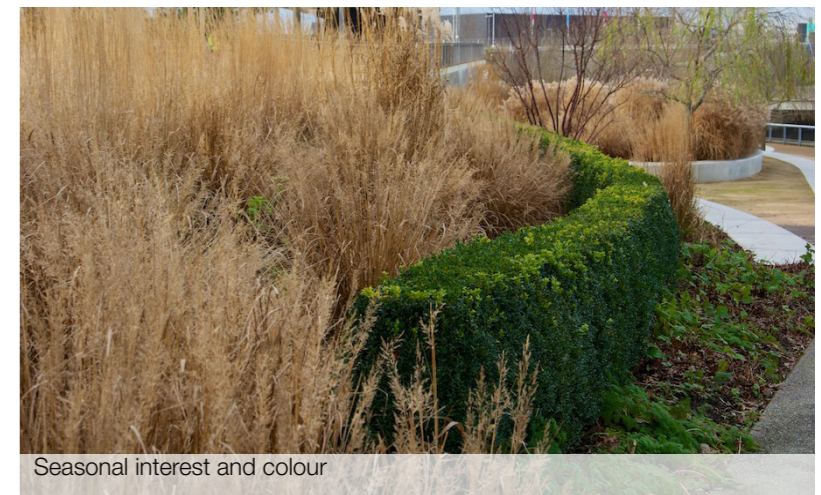
Mounding to run up and down



Combined with slide elements



Informal paths through drifts of ornamental grasses



Seasonal interest and colour

6.4 Landscape Masterplan - Description of spaces

6.4.2 COMMUNAL GARDENS

CHILDRENS PICNIC GARDEN AND SOCIALISATION SPACE

Role:
Picnic lawn for toddlers and 5-11 year olds, informal seating for the Workspace occupiers and a socialisation space for adults

Character:
Stylised formal gardenesque

Aspect:
East facing childrens' garden, south facing Workspace garden and west facing socialisation space.

Amenity:
The children's garden includes an open lawn for flexible games and picnic tables and a bench for adults; seating nodes within ornamental planting strips for the Workspace occupiers; and a Pergola seating niche within the Socialisation Space.

Planting:
Formal with defensible shrub planting around building perimeters and trees along the park frontage. Lush ornamental groundcovers and perennials form the understorey, ranging in species according to the aspect and availability of the sun path. More colourful species are chosen for the Childrens Garden

