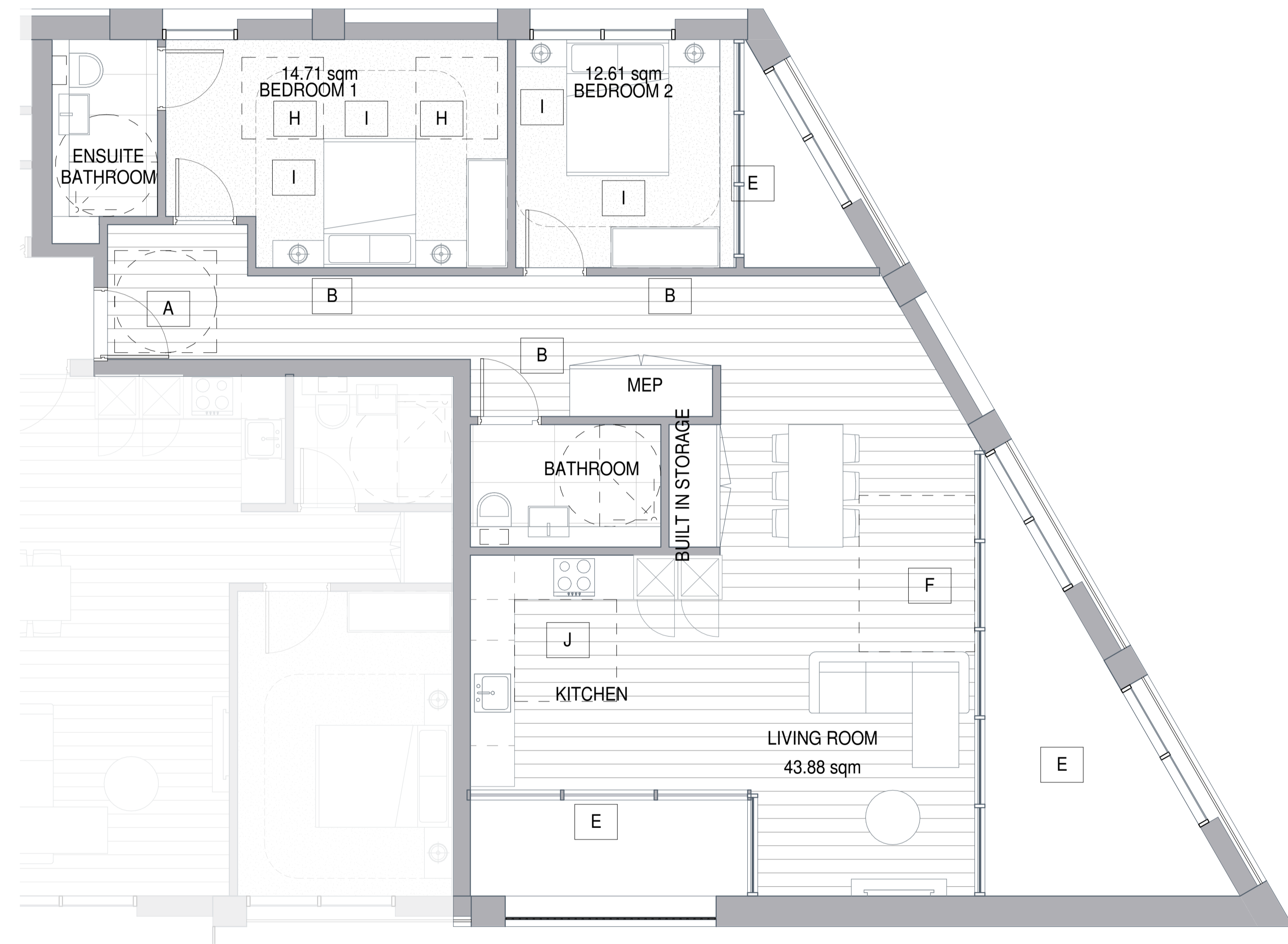


- A. ENTRANCE LEVEL DOOR 850mm CLEAR OPENING WIDTH WITH CIRCULATION ROUTE TO DOOR 1500mm
- B. INTERNAL CIRCULATION DOORS IN UNITS MIN CLEAR WIDTH 850mm WITH 300mm NIBS
- C. BATH 1700mm X 700mm (WITH 1000mm X 1000mm ACTIVITY SPACE FOR FURNITURE SHOWER PROVISION) & 400mm END TRANSFER SPACE
- D. 1500mm X 1500mm TURNING CIRCLE IN MAIN BATH ROOM
- E. SLIDING DOOR TO BALCONY 800mm MIN CLEAR OPENING WIDTH
- F. 1700mm x 2300mm TRANSFER SPACE
- G. 1800mm x 1500mm MANEUVERING SPACE
- H. 1200mm x 1200mm ACTIVITY SQUARES IN BEDROOMS
- I. 1000mm TRANSFER SPACE TO SIDES AND FOOT OF BED
- J. 1500mm x 1500mm ACTIVITY SPACE IN KITCHEN

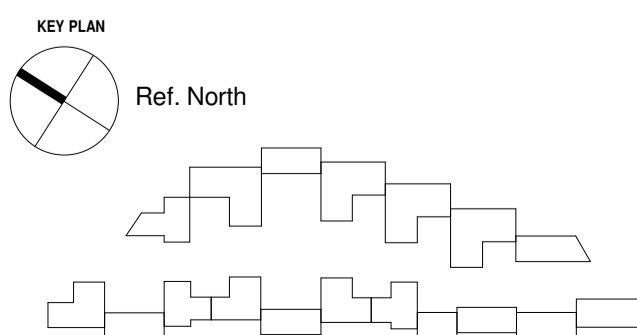


3 Bedroom apartment D.01



2 Bedroom apartment E.01

REV	DATE	DESCRIPTION
A	07.07.16	Scheme 7
P1	15.03.19	Planning issued for information



NOTES
 Check and verify all dimensions prior to commencement of work.
 This drawing shall be read in conjunction with all other contract documents including those by other consultants, and including specifications.
 Seek clarification of inconsistencies/ conflicts.
 Figured dimensions shall take precedence to scaled dimensions.

DRAWN Author
CHECKED Checker
JOB NO. 44032

This drawing is COPYRIGHT and shall remain the property of
ARNEY FENDER KATSAIDIS

CLIENT
 Meadow Residential

PROJECT
 Mill Hill - London

ARCHITECTS:
 ARNEY FENDER KATSAIDIS ARCHITECTURE & INTERIORS
 44-46 SCRUTTON STREET, LEVEL 1
 LONDON, EC2A 4HN, UNITED KINGDOM
CLIENT:
 MEADOW RESIDENTIAL
 FIRST FLOOR, 50 GREAT
 MARLBOROUGH STREET, LONDON,
 W1F 7JL

STRUCTURAL ENGINEER:
 HSE
 4 PEAR TREE COURT, LONDON,
 EC1P 9DS
MECHANICAL / ELECTRICAL ENGINEER:
 CHEPMAN BROS
 SUTTON HOUSE, 8-10 KIRBY STREET,
 LONDON, EC1N 8TS.

LANDSCAPE ARCHITECT:
 OUBESQUE
 THE BOATHOUSE, 27 FERRY
 ROAD, TEDDINGTON, TW11 1RN.

Arney Fender Katsalidis

DRAWING TITLE
 TYPICAL 2 BEDROOM E.01 - 3 BEDROOM D.01

SCALE
 1:100@A1

REVISION / DRAWING No.
 P1 | PLANNING

A50-00-25