

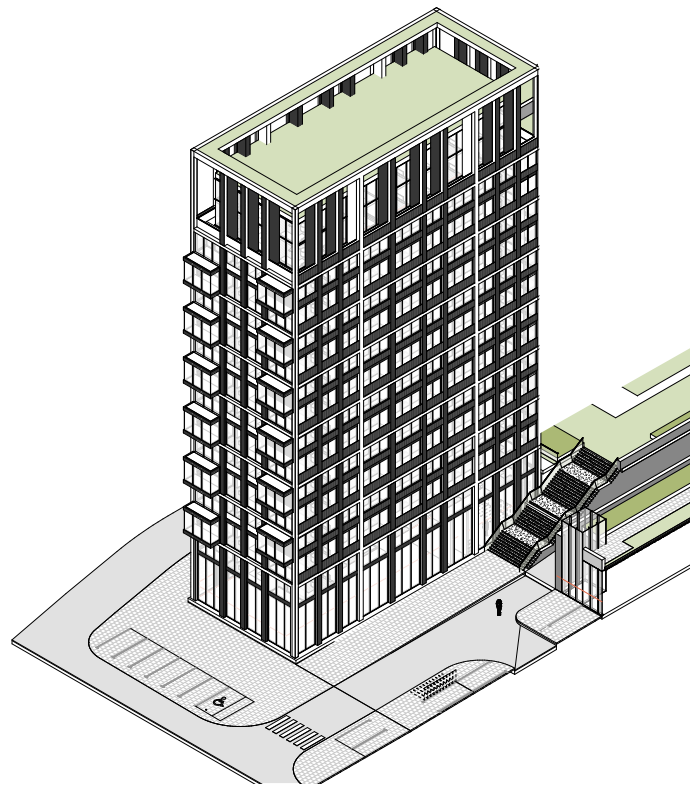
## 5.0 DETAIL SCHEME (BLOCK TYPE C - TOWER BUILDING)

### 5.6 Block Type B – Scale and Massing

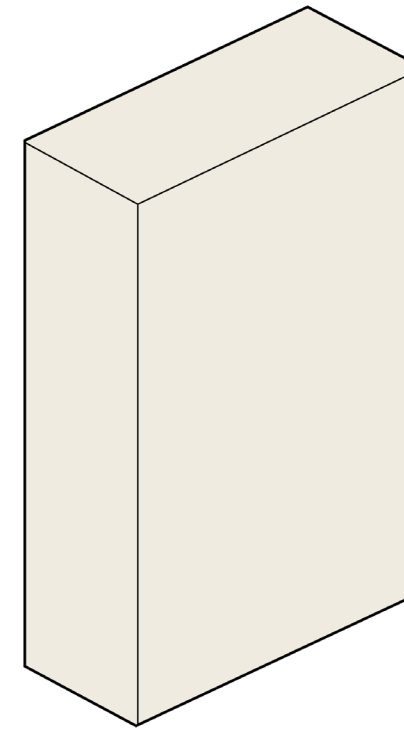
An important difference between the Tower Building and the other Block Types is that every second floor is expressed, in order to lend a slender proportion to this important taller element of the scheme and to soften its visual impact.

The top of the tower element is recessed, with private amenity areas creating a crown and top to the tower.

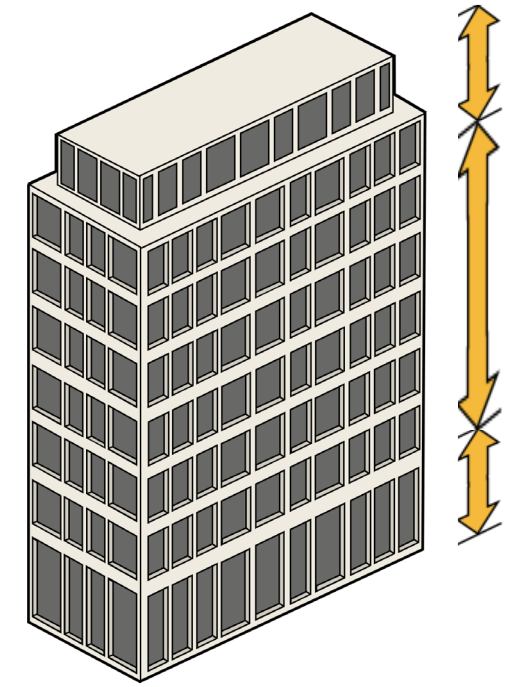
The residential entrances and access to the building are all from the inner greenery (non-motorway) side on the ground level.



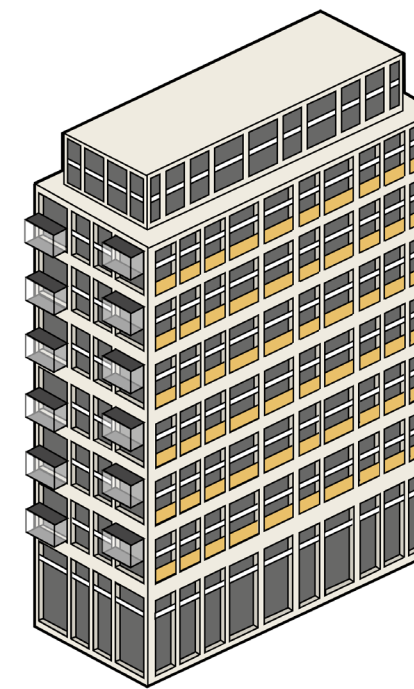
BLOCK TYPE C - TOWER BUILDING



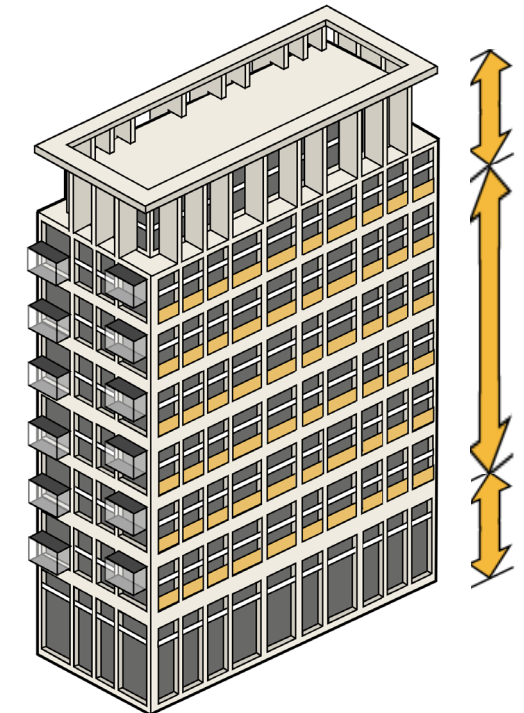
SOLID MASS



EXPRESSED FLOORS AND WALLS



ARTICULATE TOP, MIDDLE, BOTTOM



ADDING ADDITIONAL VERTICAL GRAIN

5.0 DETAIL SCHEME (BLOCK TYPE B - TALLER BUILDING)

5.7 Block Type B Tower – Plans

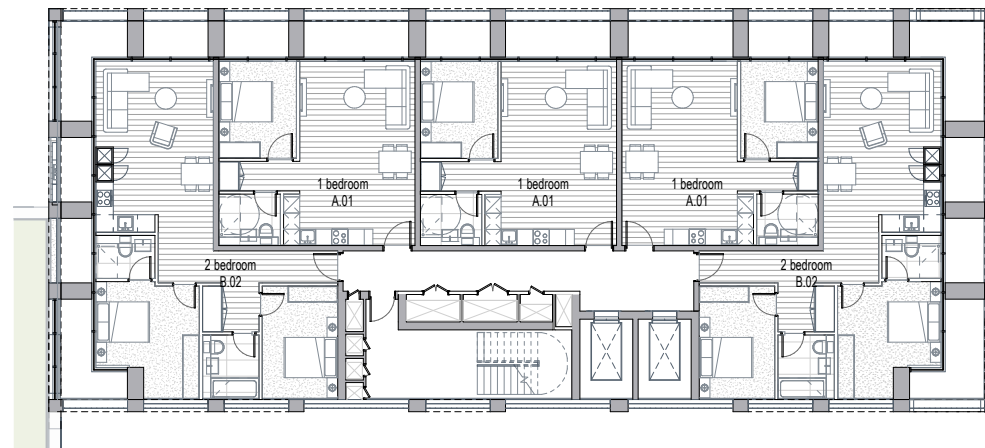
The residential tower is accessed from the lower ground floor through a dedicated lobby. The general plan arrangement through the tower consists of 1 bed, 2 bed and 3 bed units with winter gardens.

The tower is crowned by recess terraces to create a vibrant top to the building.

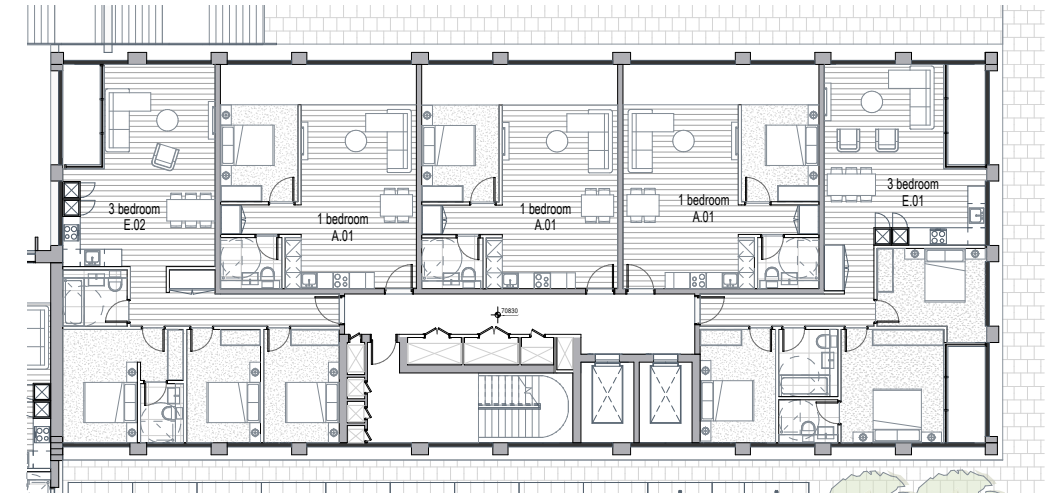
The typical plans consists of a ground floor with lobby access. The ground floor has units facing onto the main courtyard space, and these units have living rooms facing the main inner space with bedrooms facing either the courtyards or motorways.

The typical plan has 1 bed, 2 bed and 3 bed units with balconies either recessed or projecting into the courtyard.

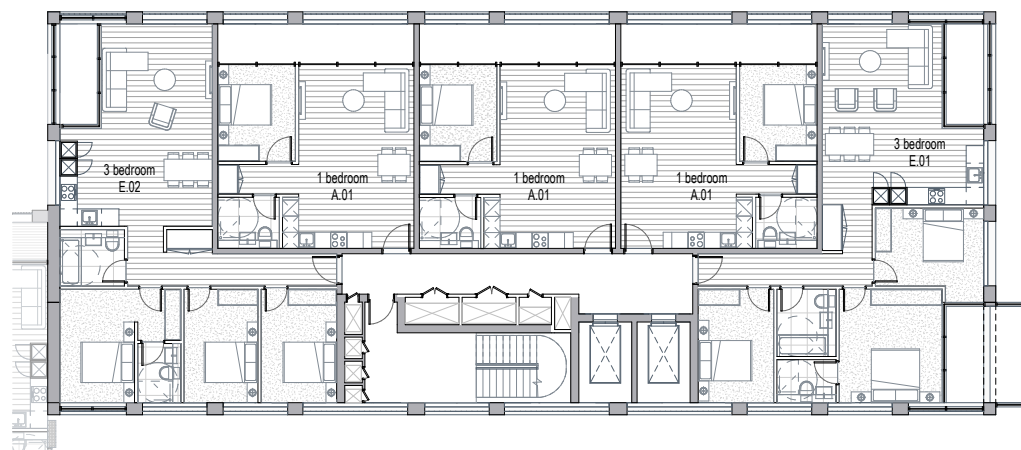
The upper level is set back and finished with a crowning top. The plan has four units to the core, on the top level.



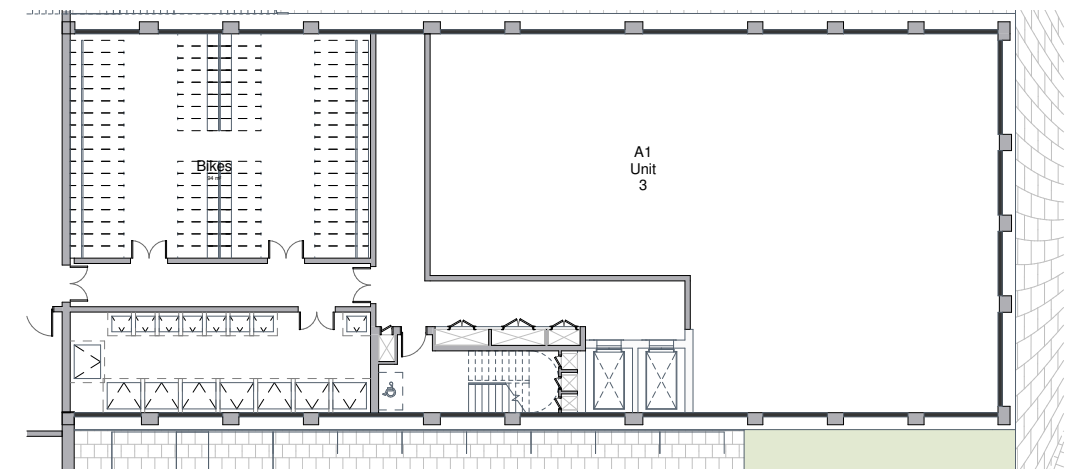
BLOCK C - Typical 2



BLOCK C - Ground Floor



BLOCK C - Typical 1



BLOCK C - Lower Ground Floor



5.0 DETAIL SCHEME (BLOCK TYPE B - TALLER BUILDING)

5.8 Block Type B - Tower - Appearance

The building has simple palette of materials, comprising a white stone frame expressed every second floor level to articulate the scale of the building and a consistent horizontal rhythm of bronze panels and vertical rhythm of brick adds further texture the tower.

The secondary skin of bronze panels lends a unique character to this building, while the white frame provides depth and changing light quality over the facades.

The inner components consist of differing types of balconies and timber louvre screens, to further soften and add texture to the inner facades. The balconies can be additionally greened by residents, to further soften their feel.

The façade is constructed from six materials:

- Stone / GRC frame (white)
- Brick piers
- Bronze metal panels
- Aluminium (window frames and metal vertical bottom panels)
- Metal Balustrades (dark black colour)
- Green walls
- Stone walls to lower ground levels



TOP FACADE MATERIALS

RECESS GLAZED TOP



STONE FRAME

BRASS INFILL

BRICK PIERS AND WHITE HORIZONTAL FRAME



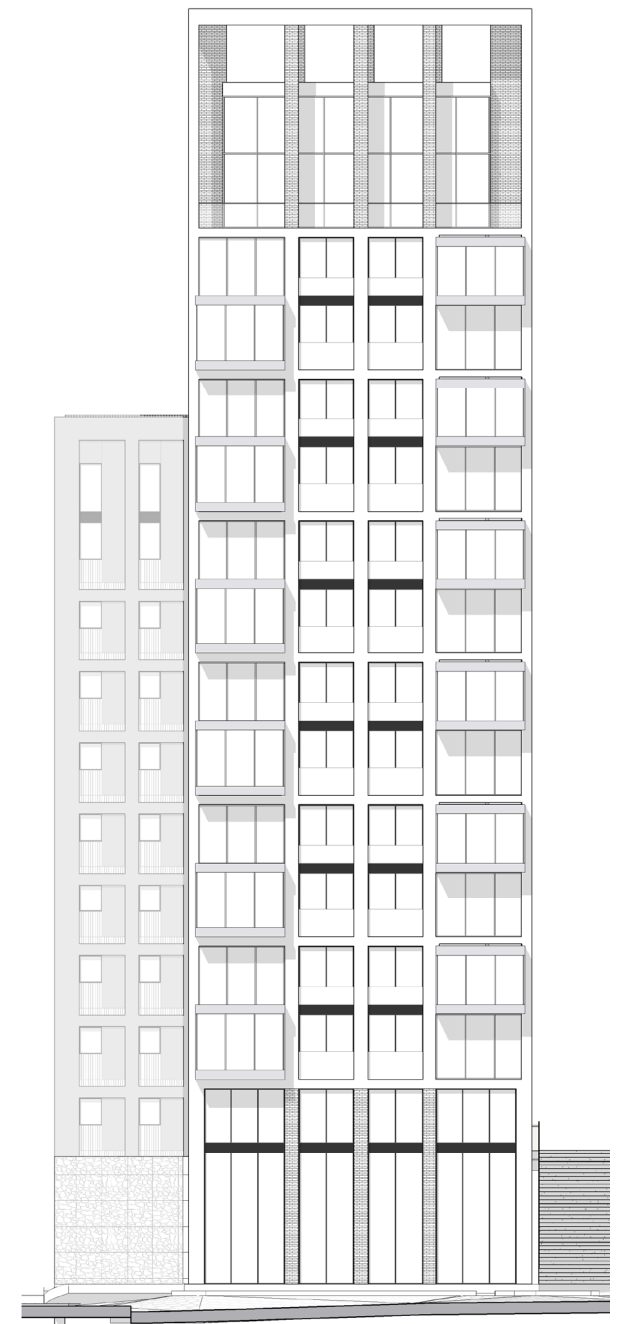
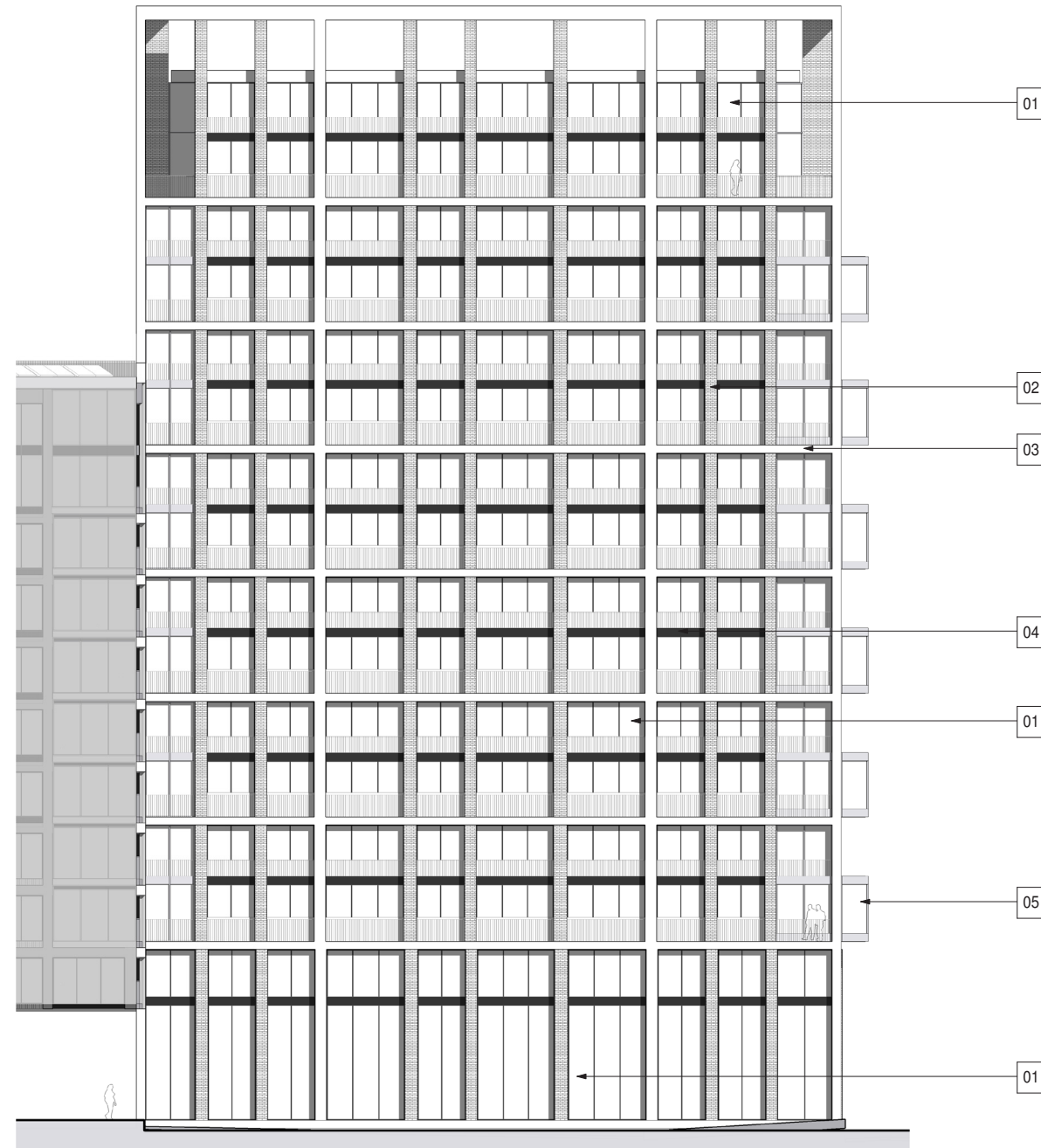
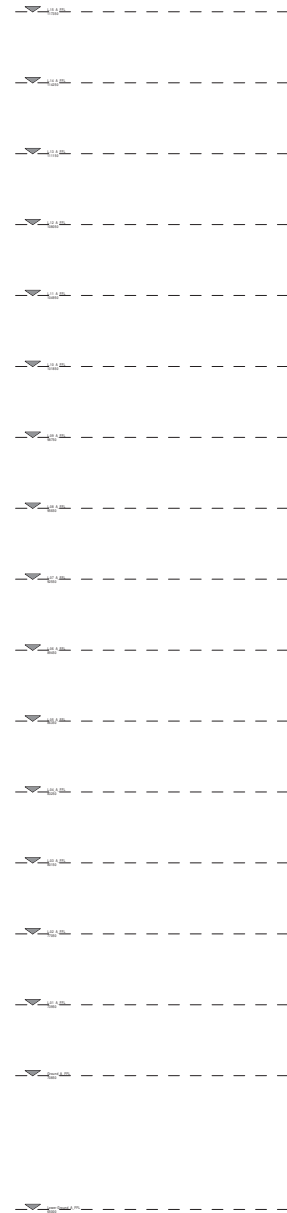
BASE FACADE MATERIALS



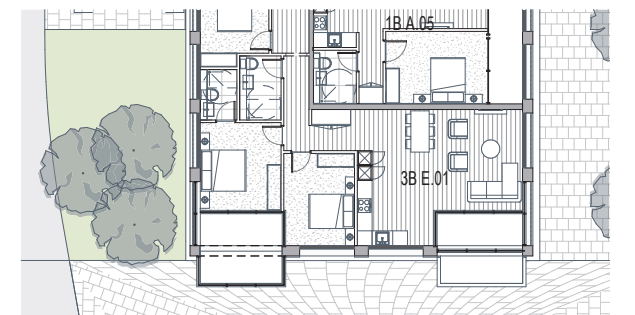
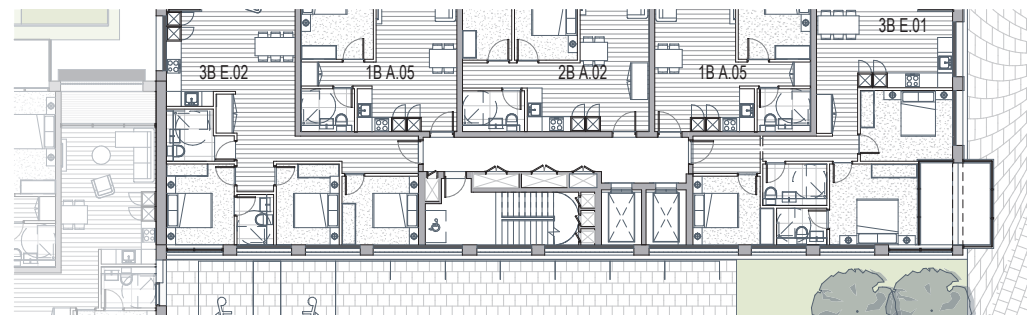
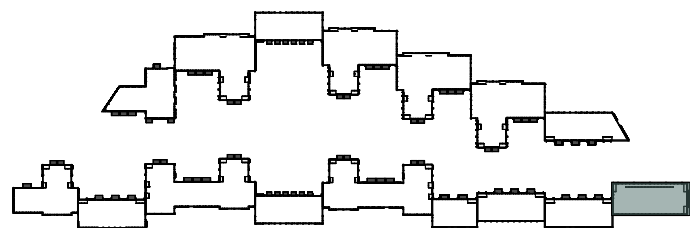
5.0 DETAIL SCHEME (BLOCK TYPE C - TALLER BUILDING))

Materials Key:

- 1. DOUBLE GLAZED UNIT
- 2. BRICK VERTICALS - BEIGE
- 3. STONE FRAME - LIGHT GREY
- 4. BRONZE PANEL
- 5. WINTER GARDENS
- 6. STONE GABION WALL



KEY PLAN



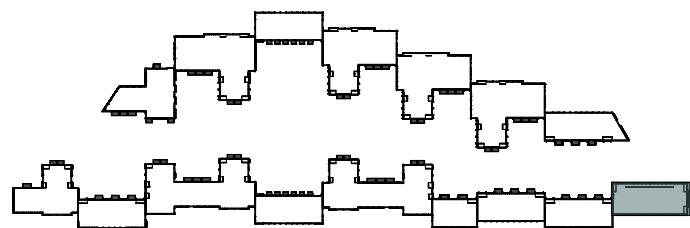


5.0 DETAIL SCHEME (BLOCK TYPE B - TALLER BUILDING))



FACADE DETAIL

KEY PLAN



COLOURED BAY STUDY



5.0 DETAIL SCHEME (BLOCK A - R)

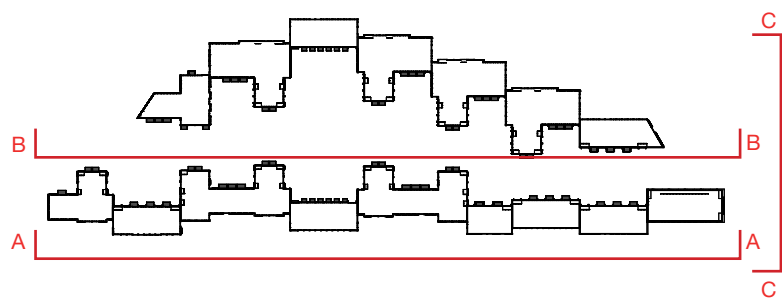


OUTWARD M1 FACADE - AA



MILL HILL WALK FACADE - BB

KEY PLAN



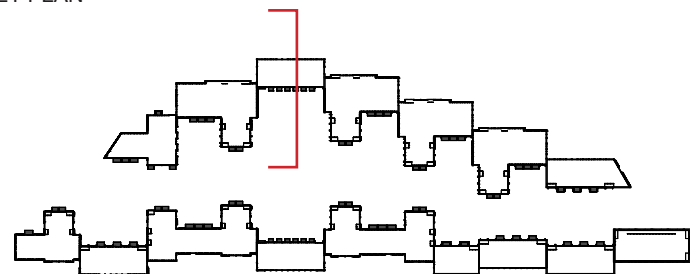
MILL HILL WALK SOUTH ENTRANCE - CC



5.0 DETAIL SCHEME (BLOCK TYPES A - R)



KEY PLAN



SECTION THROUGH BLOCK A



5.0 DETAIL SCHEME (BLOCK A - R)

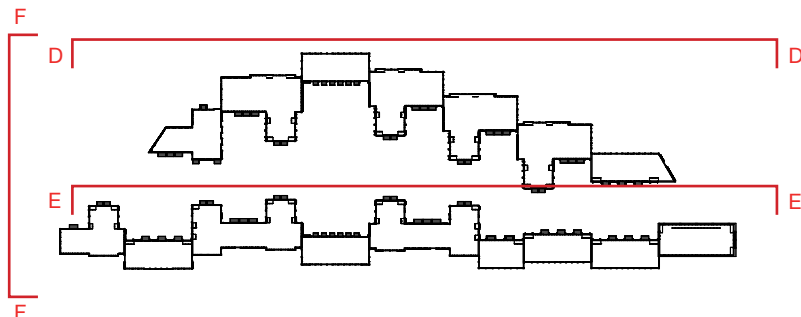


FACADE FACING MILL HILL - DD



FACADE THROUGH THE COURTYARD SPACES ALONG MILL HILL WALK - EE

KEY PLAN



FACADE FACING NORTH - FF





5.0 DETAIL SCHEME (BLOCK A, B, C AND D)



KEY PLAN

SECTION THROUGH BLOCK C

## 5.0 DETAIL SCHEME (BLOCK A - R)

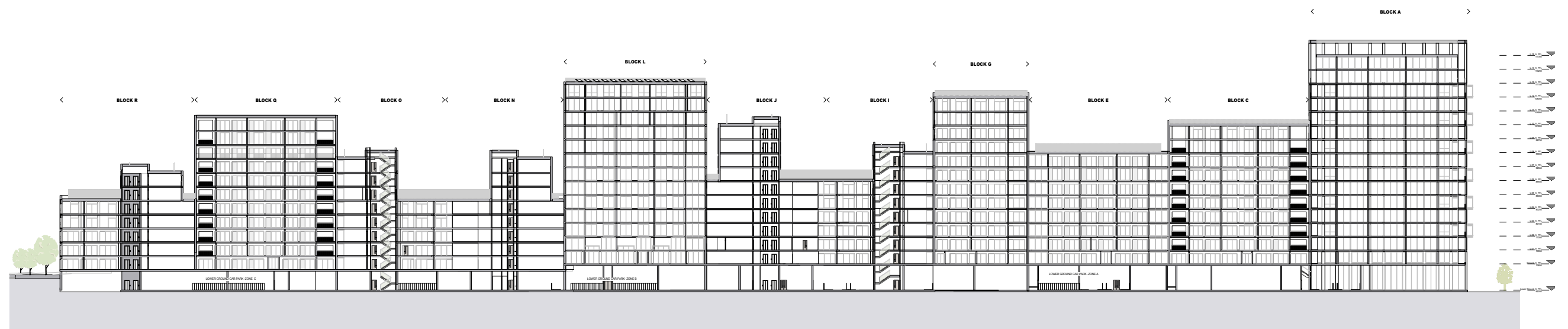
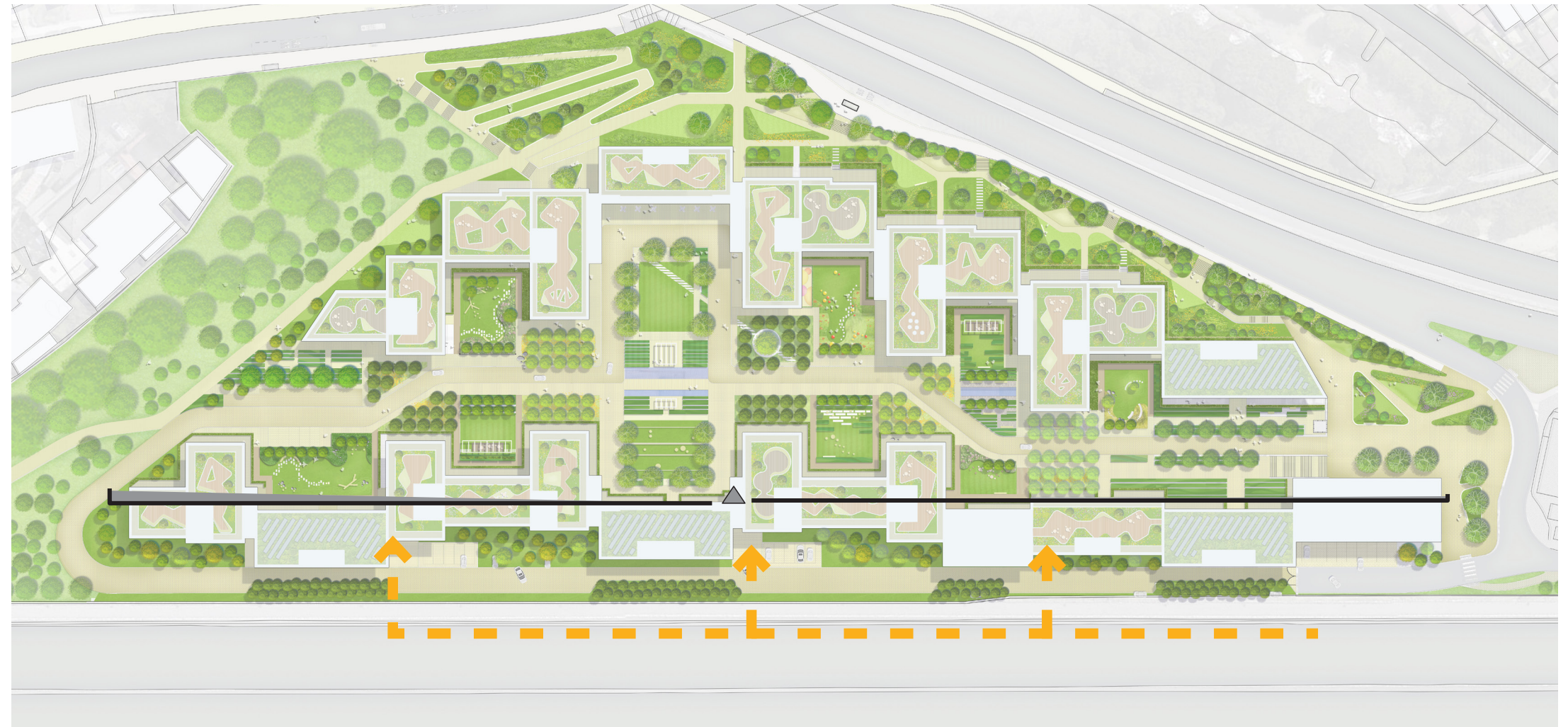
### 4.12 Lower Ground Car Park and Forecourt Retail Car Park

The Lower Ground lies below all building Blocks with direct core access to this level from residential cores. This level contains car parking, cycle parking areas, plant, CHP, refuse areas, and commercial use under Blocks A and B to the South.

There are three vehicle access points around the perimeter road leading to defined car and cycle parking zones under the building Blocks.

The total car parking spaces has been reduced from previous planning application and the number of cycle spaces has increased. There are 366 car spaces for residential at Lower Ground, 10 visitor parking, 9 for retail parking and 5 car club spaces on lower ground and ground floor level.

Furthermore, a total of 1,574 cycle spaces are provided on this level. There is also an extra 29 bike spaces for retail and commercial.



SECTION THROUGH LOWER PARKING LEVEL