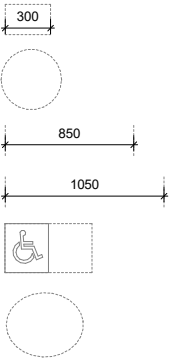


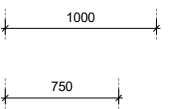
Part M(3) Space Requirements for Wheelchair User Dwellings:

General:



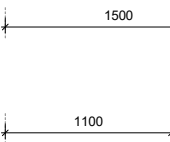
- Min. 300mm nib provided to the leading edge of doors, 200mm to following edge
- Min. 1500mm clear turning circle inside entrance, in front of door when closed
- Min. 850mm door clear opening width
- Min. 1050mm clear hallway width, or 1200mm when approach to door is not head on
- Min. 1100mm x 1700mm wide space must be allocated for wheelchair transfer / storage
- Min. 1400mm x 1700mm turning ellipse to kitchen

Bedrooms:



- Principal double bedroom to provide 1000mm wide clear access zone to both sides and foot of the bed and 1200mm x1200mm manoeuvring space to either side of the bed
- Every bedroom to provide a clear 750mm access route from door to the window, along with a 1200mm x 1200m manoeuvring space.

Accessible Bathrooms:



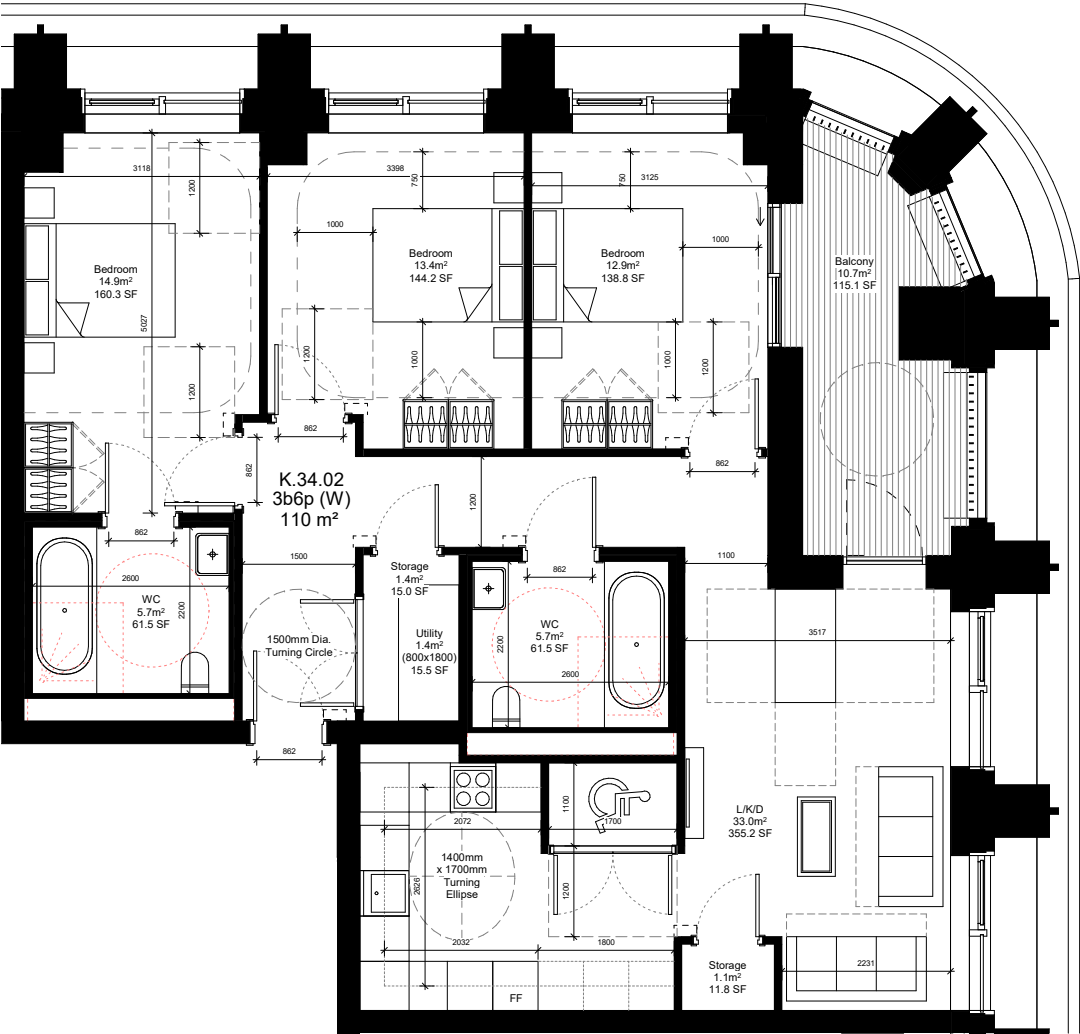
- Provide a 1500mm clear turning circle
- Accessible bathroom door to open out
- Provide clear area of 1100mm in front of WC, and 1000mm to the side

Private Outdoor Space



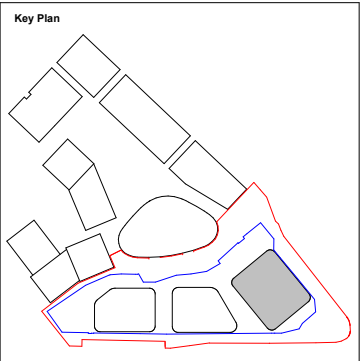
- 1500mm minimum clear width

Note:
Typical Apartment applies to Levels 34-37 (4 no. in total)



Do not scale from this drawing. All dimensions to be checked on site. All omissions and discrepancies to be reported to the Architect immediately

This work is copyright and shall not be reproduced or used for any other purpose without the written permission of Squire and Partners.



Issued for Planning	18/11/22	P1
Description	Date Chk	Rev

SQUIRE & PARTNERS

Squire and Partners LLP
The Department Store
248 Ferndale Road, London SW9 8FR
T: 020 7278 5555

info@squireandpartners.com
www.squireandpartners.com

Project
Paddington Green Police Station
London, W2

Title
Block K - Wheelchair User Typical 07
Levels 34-37
Apartment K.34.02

Suitability	Status	
S2	For Information	
Date	Scale @ ISO A1	Job Number
08.11.22	1:50	15044
Drawing Number	Revision	
15044-SQP-03-ZZ-DP-A-PL01206	P1	

