



**PADDINGTON GREEN**  
POLICE STATION

November 2022

# Lighting Strategy

Lighting Strategy – November 2022 – GLA0711

**Berkeley**  
Designed for life



**PADDINGTON GREEN**  
POLICE STATION

# Lighting Strategy

18<sup>th</sup> NOVEMBER 2022

**Berkeley**  
Designed for life



# **Paddington Green Police Station**

**Lighting Design Strategy**

**PGPS-SQP-VZ-ZZ-ZZ-RP-A-0200120**

For Berkeley Homes (Central London) Ltd

**Document History**

Rev	Date	Purpose of Issue	Author	Reviewer
P01	18/11/22	Issued for Panning	EJ	GD



**Contents**

- 1.0 Lighting Strategy Exterior Landscape Paddington Green
  - 1.1 Context
  - 1.2 Hierarchy of Light Levels
  - 1.3 Focal Points and Views
  - 1.4 Exterior Landscape Lighting
- 2.0 Facade Lighting
  - 2.1 Entrances & Ground Floor Activation
  - 2.2 Retail Lighting
  - 2.3 Street Level Facade Lighting Diagrams
- 3.0 Inset Balconies
  - 3.1 Lighting Approach

1.0 Lighting Strategy Exterior Landscape Paddington Green

1.1 Context

The lighting design for PGPS seeks to enhance the architectural intent and place-making set out within the wider West End Gate masterplan.

Continuing Paddington Green through into Newcastle Place to create a new green urban oasis at the heart of the West End Gate development. Distinct pedestrian, cycle and vehicular routes are delineated through the surface treatment, planting and lighting.

Accent lighting will be used within the linear public garden to generate interest and provide a focal point for navigation. This will be supplemented by the use of illuminated bollards to light paths and low level lighting to greenery & proposed water features.

Taxis, deliveries and drop-offs will be directed to the north of the Westmark. Light levels along this route will be developed to comply with road regulations, implementing street lighting with diffuse optic and low level lighting to greenery for pedestrian way-finding.

Activation to ground floor frontages via residential and retail uses will bring animation to the street frontage. This will be enhanced through amenity lighting to retail shop-fronts, and up -lighting to denote key building entrances.

Key

- Existing Bus
- Taxis / Deliveries / Drop-Off
- Cycle Route
- Pedrestrian Route
- Residential Parking Route
- Emergency Vehicle Route

- Flexible Commercial
- Residential
- Community Access
- Plant
- Vehicle Access
- Cycle Access

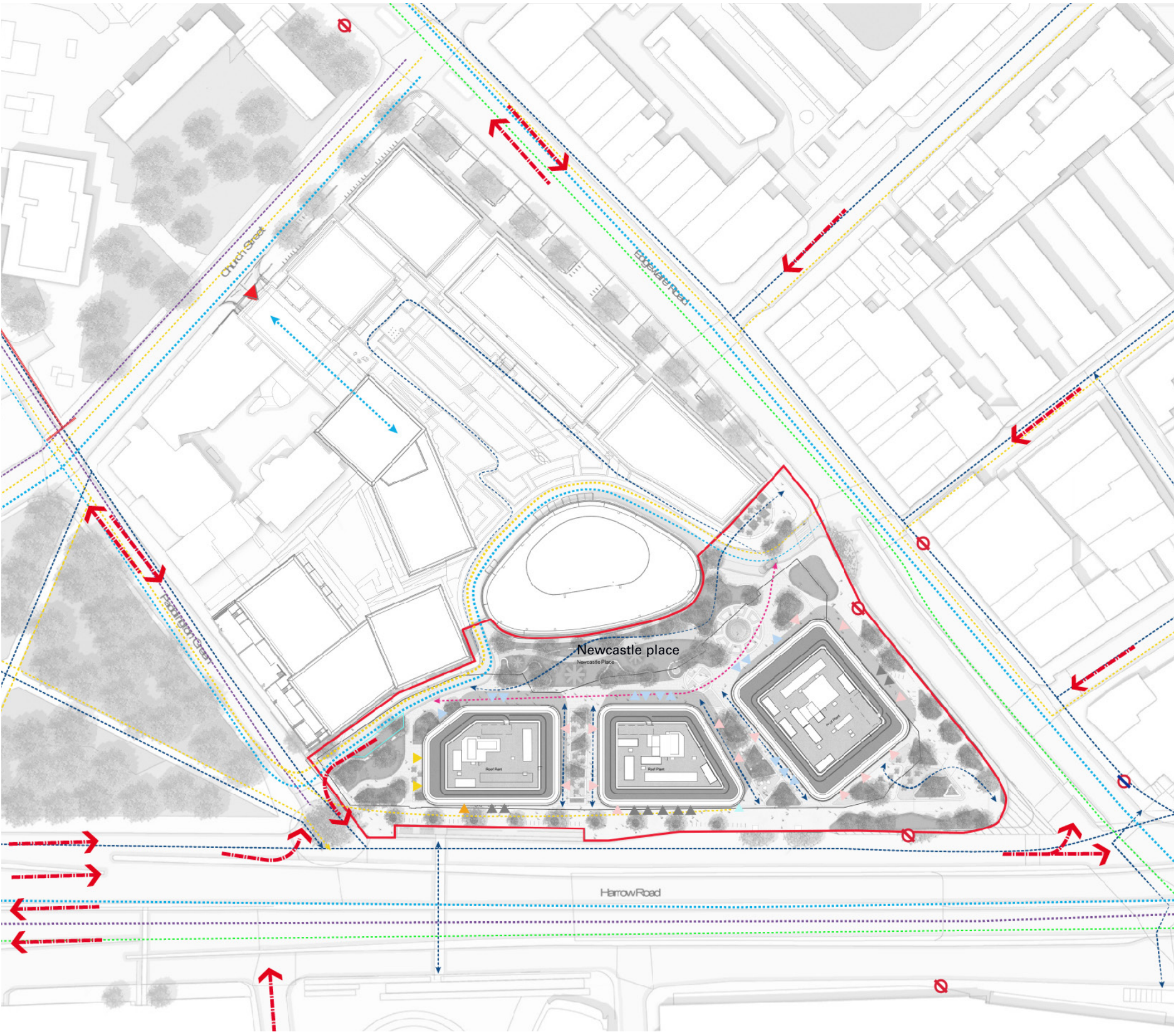


Figure 1.1 Access & Circulation



1.2 Hierarchy of Light Levels

Lighting Levels



1

URBAN AREA

- High traffic - vehicles & pedestrians
- Light levels to comply with road regulation
- Street lighting with road optics
- Low level lighting to pavement for pedestrians
- Amenity lighting from retail shop-fronts

2

RESIDENTIAL AREA

- Medium traffic - vehicles & pedestrians
- Light levels to comply with road regulations
- Street lighting with diffuse optics
- Low level lighting to greenery for pedestrians
- Low glare lighting for residents

3

PUBLIC GARDEN

- Medium/Low traffic - pedestrians
- Accent lighting to generate interest
- Focal point for navigation
- Short poles or bollards to illuminate path
- Low level lighting to greenery & water feature



Figure 1.2 Areas hierarchy - light levels



1.3 Focal Points and Views

1.3.1 Established trees & avenue of hornbeams

Mature trees throughout the site will feature up-lighting co-ordinated with landscape architect proposals.

1.3.2 Arrival water feature /piazza with seating

Lighting to illuminate water sculpture. Detail to be coordinated with sculpture specification. Low level lighting to benches and benches specification to be coordinated with the landscape architect.

1.3.3 Harrow Road to Newcastle Place Pedestrian link

A linear avenue of planting signposts a through-route from Harrow road to Newcastle place. This planting and pathway will be illuminated by accent lighting within the granite setts in line with landscape architects proposals.

1.3.4 Focal Artwork

The junction of Edgware Road will be regenerated to expand the high quality landscaping on the corner of Edgware and Harrow Road. An illuminated Artwork will serve as a focal point to the plaza.

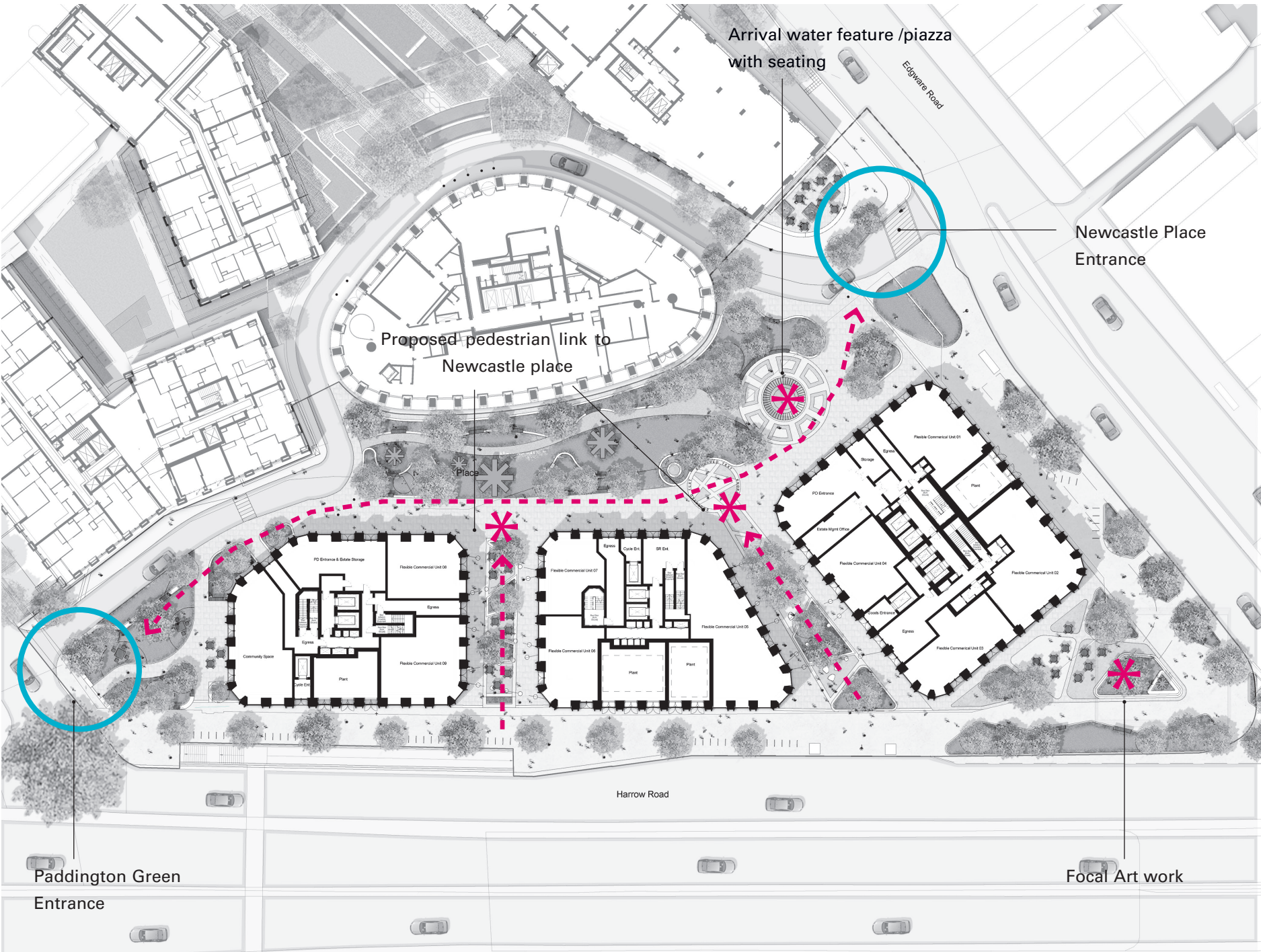





Figure 1.3 Focal Edges and Focal Points from Murdoch Wickham landscape proposals

Key

-  Focal Point
-  Focal Art work
-  Green trail



1.4 Exterior Landscape Lighting

1.4.1 Mood board

- Focal point to road entrance for navigation [Fig 1.4]
- Street lighting to road & pavement [Fig 1.5]
- Low level lighting to trees & furniture [Fig 1.6]
- Accent lighting to bosque & planters [Fig 1.7 & Fig 1.8]
- Lighting to art/sculpture [Fig 1.9]
- Diffuse lighting to building entrances [Fig 1.10]
- Path lighting to guide perambulation [Fig 1.11]



Figure 1.4



Figure 1.5

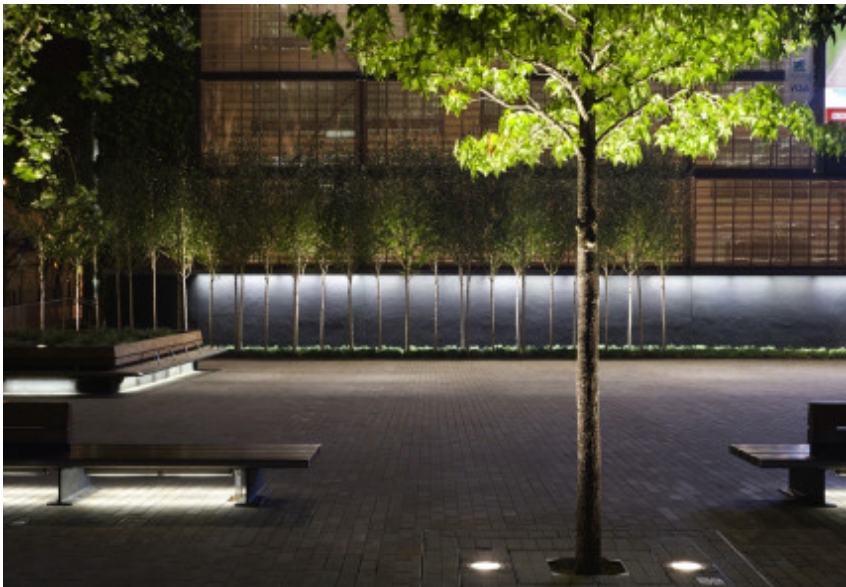


Figure 1.6



Figure 1.7



Figure 1.8



Figure 1.9



Figure 1.10



Figure 1.11





Figure 1.12 Roof garden lighting strategy

- Key
- ..... Feature landscape lighting
  - ..... Feature lighting to play area
  - Low level strip lighting to seating
  - Accent lighting
  - Pathway lighting



2.0 Facade Lighting

2.1 Entrances & Ground Floor Activation

Down-lighting to be integrated within the soffit of recessed entrances.

Provision for floor luminaires behind the glazing line in reception areas to provide ambient lighting.

Feature up-light fittings to illuminate the GRC columns either side of key entrances. These will be positioned to avoid issues with glare from the internal spaces.

Feature light strips will be used within the planters to light the front face of the soft landscape adjacent to entrances.

2.2 Retail Lighting

Gallery lighting to flexible commercial frontages.

Up-lighting framing the GRC columns, with down-lighting to wash shop frontages.



Figure 2.2 Block K - Entrance from Harrow road / Edgeware Road Junction



Figure 2.1 Bright shop frontages



Figure 2.3 Window framing down-lighting

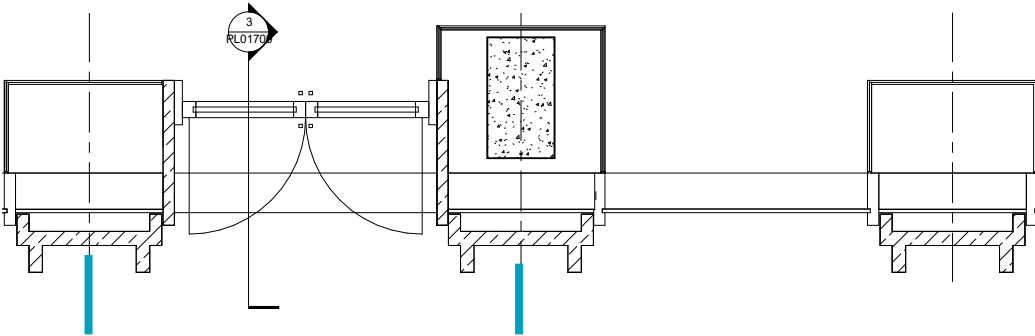
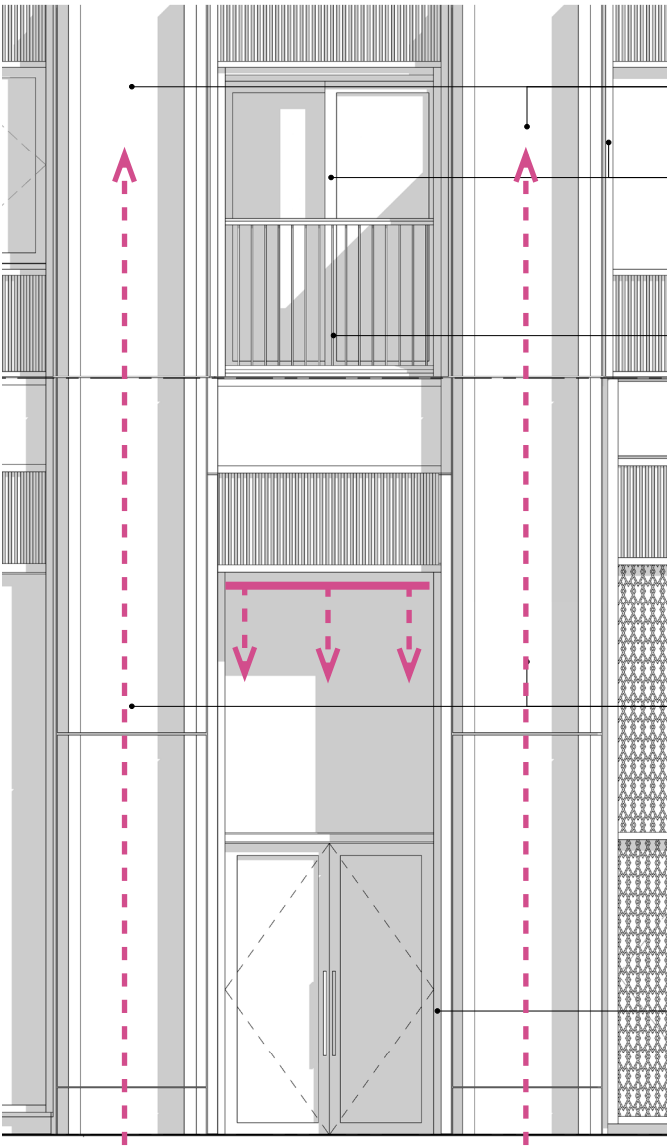
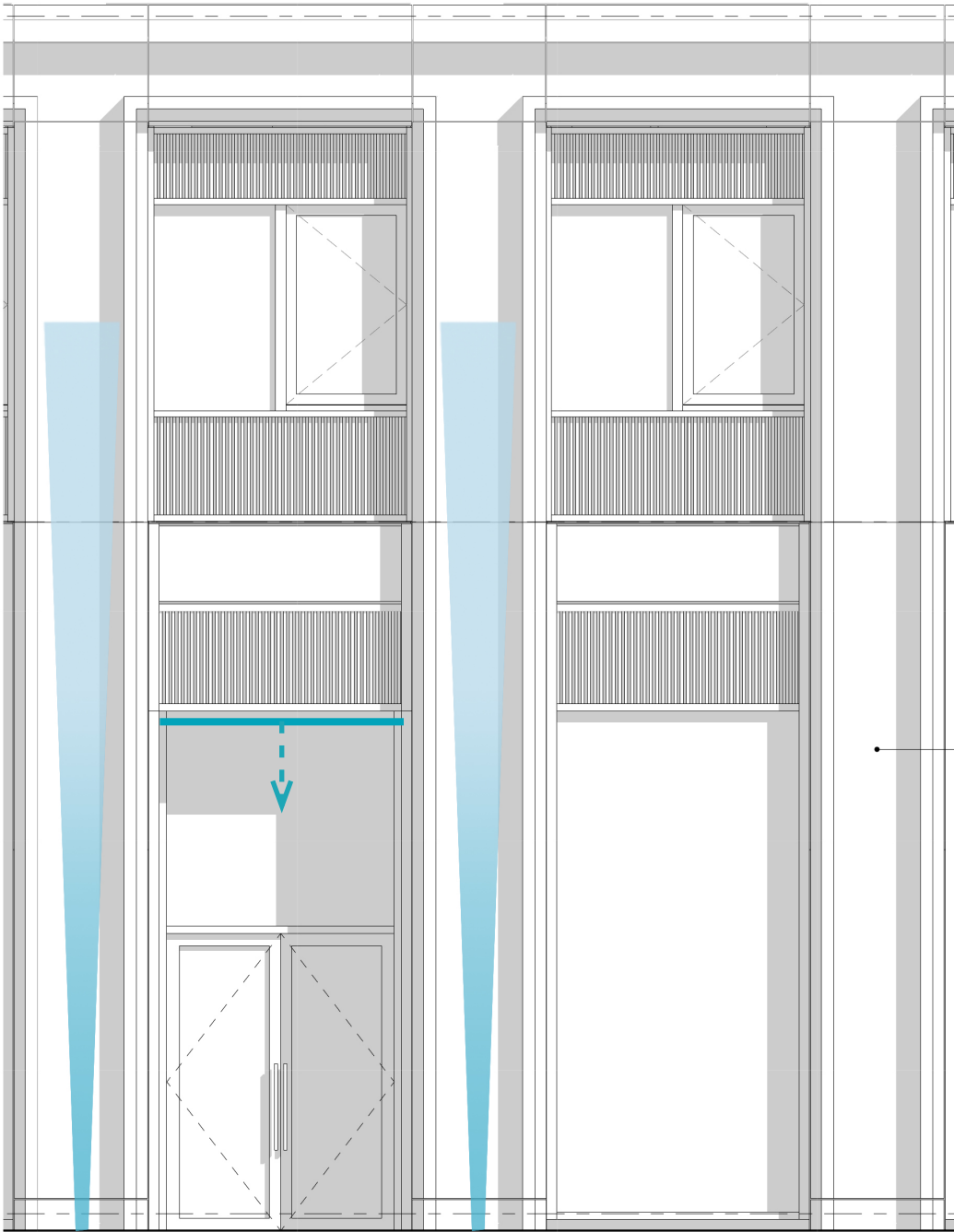


Figure 2.4 Floor recessed up-lighting

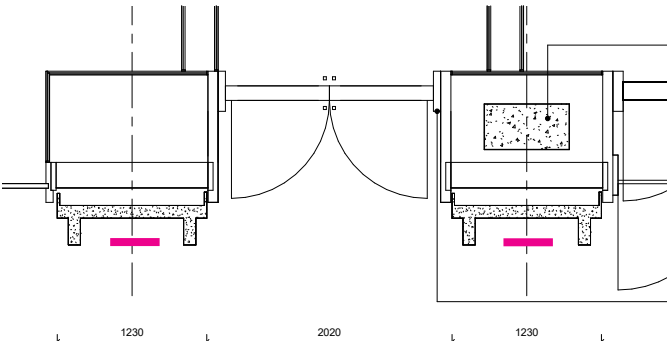


2.3 Street Level Facade Lighting Diagrams

- Key
- Main entrance lighting
  - Comercial frontage lighting



Residential Entrance lighting strategy



Commercial Frontage lighting strategy



3.0 Inset Balconies

3.1 Lighting Approach

Surface mounted fittings on one side of balconies provide illuminate to each residents private amenity space without overspill of light to facade.

To be installed consistently across the facade. Proposed fitting <100mm diameter, circular shape to avoid potential injuries due to sharp edges. Downward shielded output for glare avoidance and visual comfort.



Figure 3.1 Balcony lighting mood board



Wall mounted luminaire  
Manufacturer: iGuzzini  
Product: Walky round recessed  
Dimensions: D: 100mm W: 36mm

Figure 3.2



Figure 3.3 Diagram of Proposed balcony lighting

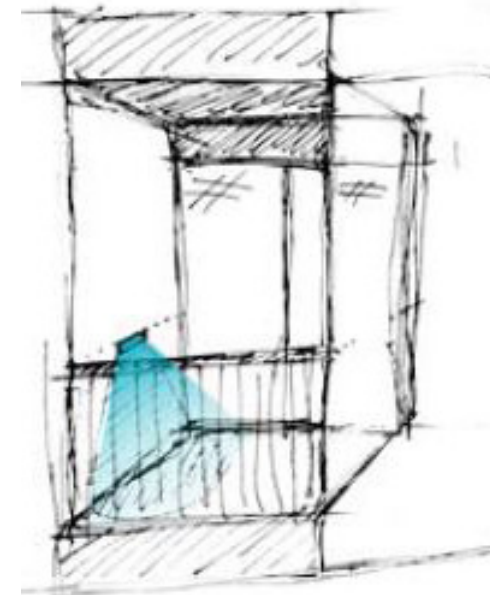


Figure 3.4 Balcony lighting concept sketch

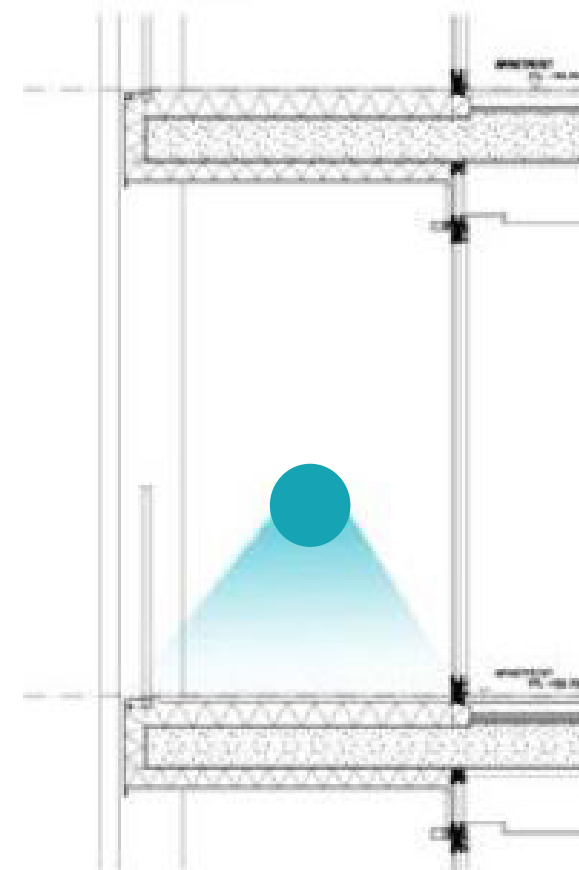


Figure 3.5 Balcony cross section illustrating wall mounted light fixture

